

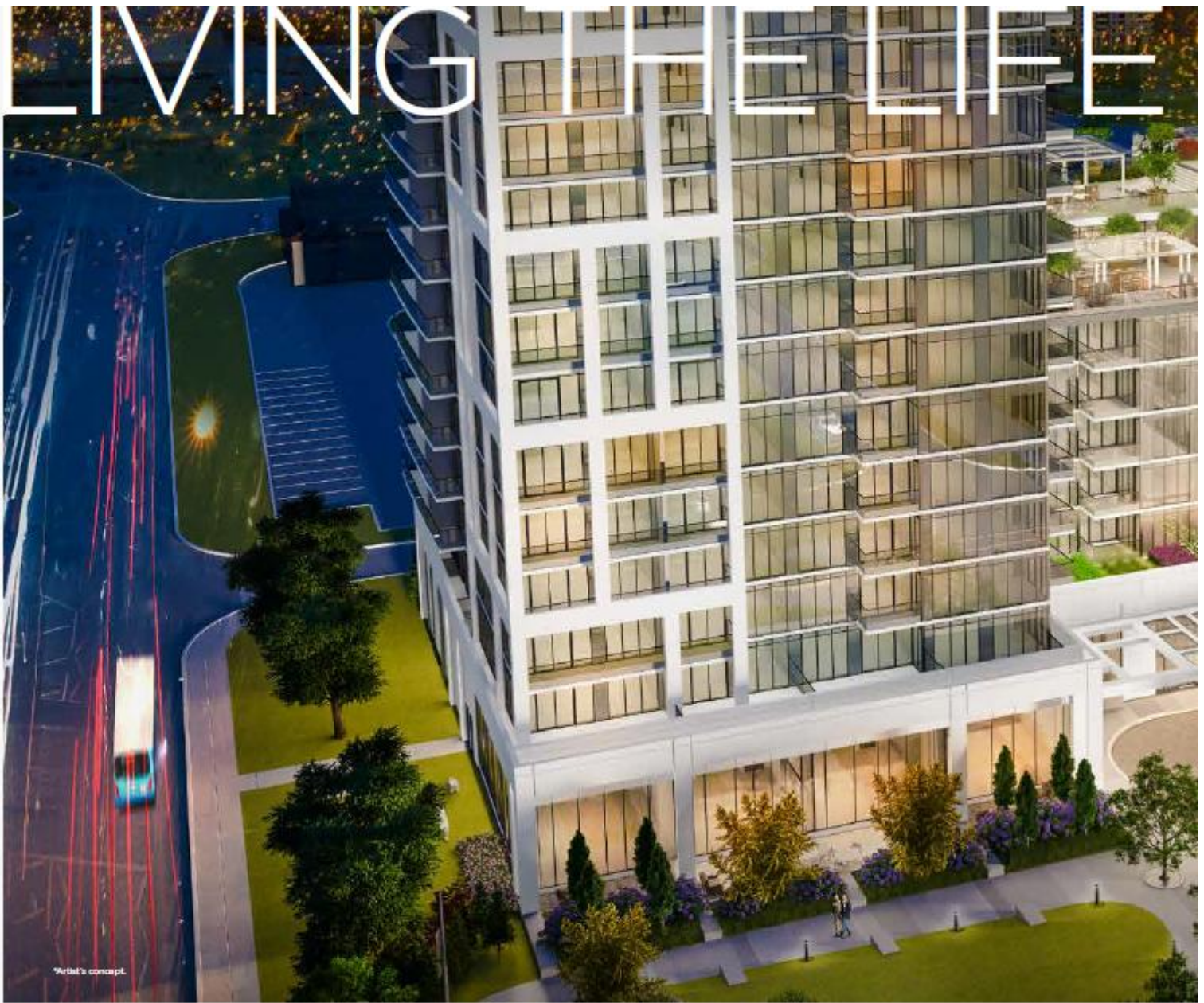
Charisma

CONDOMINIUMS

WEST TOWER



Charisma



THE ALLURE OF CHARISMA by Greenpark is the combination of stunning architectural features, refined interiors and a beautifully designed landscape – everything you ever imagined in a home and envisioned as a lifestyle is now possible. Whether you enjoy the comforts of your home, wander about outdoors, take advantage of the beautifully appointed green spaces, or go on a shopping excursion – Charisma is an exceptional urban community for everyone.



ARRIVING AT CHARISMA

YOU IMAGINED

Charisma is located in an established neighbourhood where popular shops, restaurants, entertainment and key transit access points are all within walking distance from your front door. This urban condominium is carefully designed and strategically planned for living both an active yet tranquil lifestyle. Charisma offers a world waiting to be discovered where quality time and time well spent, is a way of life.



GRAND LOBBY



A GRAND ENTRANCE

LOBBY + WIFI LOUNGE

From the moment you enter the front doors to the Grand Lobby of Charisma, you are greeted by elegance and charm. Greenpark has carefully selected materials, exquisitely crafted, to create an awe-inspiring two-storey Grand Lobby. This entrance evokes a powerful sense of space and luxury fit for even the most refined tastes. With elegant flooring, comfortable seating, and a convenient Wi-Fi Lounge, passing time, will always be time well spent at Charisma. This stunning setting is entrusted to the concierge whose sole responsibility is to ensure that all guests, whether just passing through or passing the time, are welcomed, cared for and guided in the direction they seek.

REDEFINING THE GROUND FLOOR



Surrounding the Grand Lobby are numerous main floor amenities designed with features to take socializing to the next level. From special gatherings, to a Games Room, to your own private Indoor Bocce Courts, no stone has gone unturned. With your friends and family in mind, the main floor amenities cater to your every need while our spacious design and calming décor aligns with those simply after a quiet moment to relax.

- 1 WIFI LOUNGE
- 2 PET GROOMING ROOM
- 3 THEATRE ROOM
- 4 GAMES ROOM
- 5 FAMILY DINING ROOM
- 6 BOCCÉ COURTS + LOUNGE
- 7 BILLIARDS ROOM



OUTSIDE OF THE HUSTLE AND BUSTLE of daily life, Charisma allows you to retreat back to your home and do the things you love to do. Imagine a get together with friends over a game of pool, catch a movie or that long overdue card game. Envision all those much-needed reprieves available to you within the serene setting and convenience of your own home.

LET THE GOOD



BILIARDS ROOM

Writal's concept

What's concept.

BOCCE COURTS · LOUNGE



TIMES ROLL

Charisma by Greenpark has reinvented recreation. Introducing a unique amenity just an elevator ride away; The Charisma Bocce Courts and Lounge. These Courts will offer you and your guests hours of enjoyment. Relax, unwind and catch up with friends in between games in the beautifully appointed Bocce Lounge. Day or night, hours of enjoyment await you at Charisma.



7TH FLOOR OUTDOOR POOL + WELLNESS CENTRE

- 1 SERENITY LOUNGE
- 2 WELLNESS COURTYARD
- 3 CHARISMA FITNESS CLUB
- 4 YOGA STUDIO
- 5 OUTDOOR POOL + TERRACE
- 6 POOL LOUNGE

*Orbita's concept.

REFRESH, RENEW + REJUVENATE

SEVENTH FLOOR AMENITIES

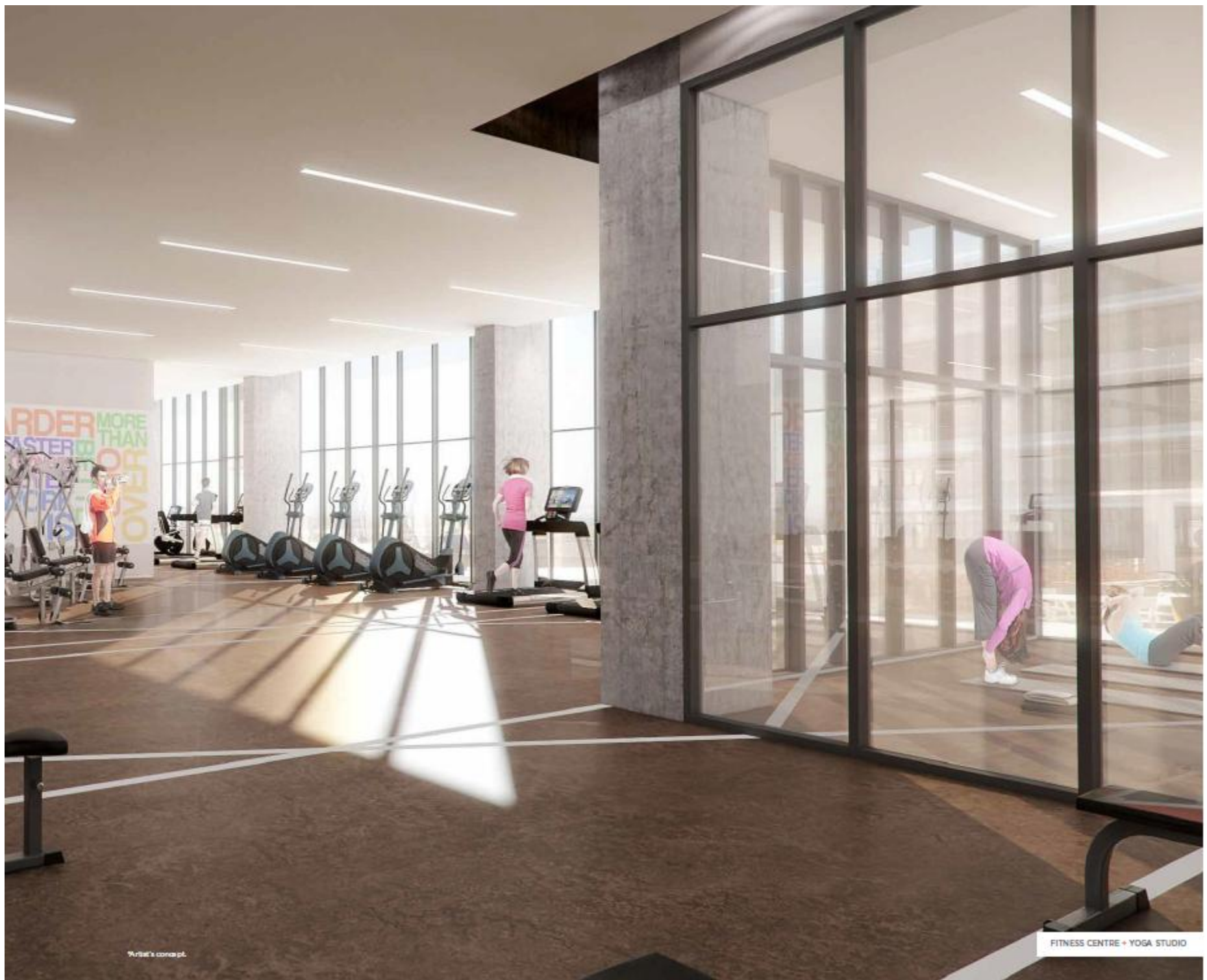
At Greenpark, we appreciate the benefits of a balanced lifestyle. We designed Charisma with the explicit aim of affording our residents every opportunity to achieve their optimal sense of self. Our Wellness Centre includes the Charisma Fitness Club with full cardio and weight equipment, a Yoga Studio, a Serenity Lounge and Outdoor and Pool Lounge, all connecting to a beautifully designed courtyard. No matter what your body is telling you, Charisma has the answer.



MINDING YOUR BODY



As a Charisma homeowner, you will be afforded every opportunity to concentrate on and achieve even your most challenging wellness aims. Whether it be working out, practicing yoga, or simply meditating the stress of the day away on the serene courtyard nestled far above the bustling world below, something is always available for your choosing and is just minutes away on our incredible 7th floor. Wellness involves body, mind and soul and it begins at Charisma.



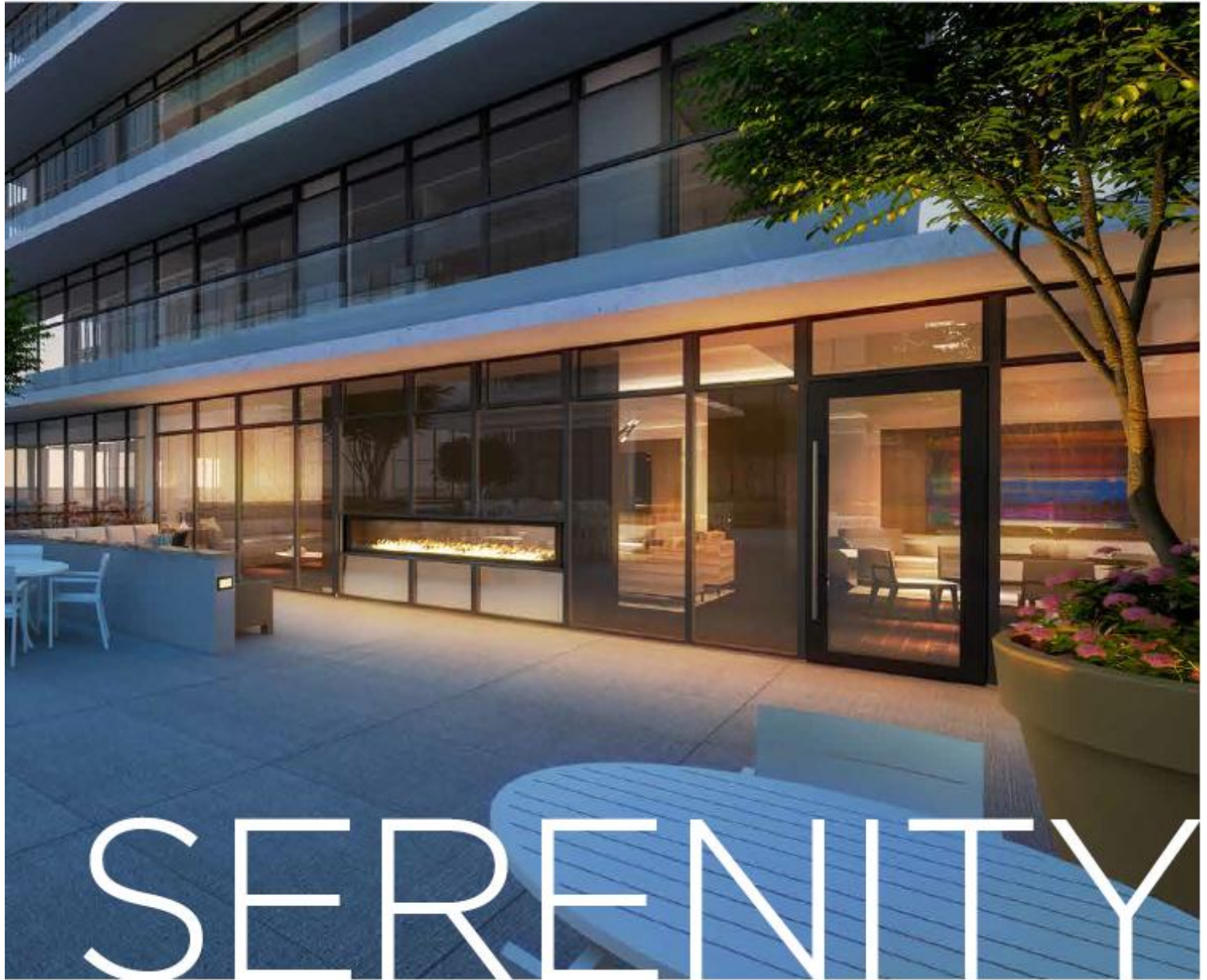
A PLACE OF



WELLNESS COURTYARD - SERENITY LOUNGE

*Artid's concept.

IN BETWEEN WORK OUTS or taking care of your body, leave some time to unwind and release your worries from the day. Escape to the Serenity Lounge, which overlooks the Wellness Courtyard, a place where peace and tranquility are the first priority. This wonderful quiet space allows you to refocus and spend time away from all your responsibilities of work and domestic life.



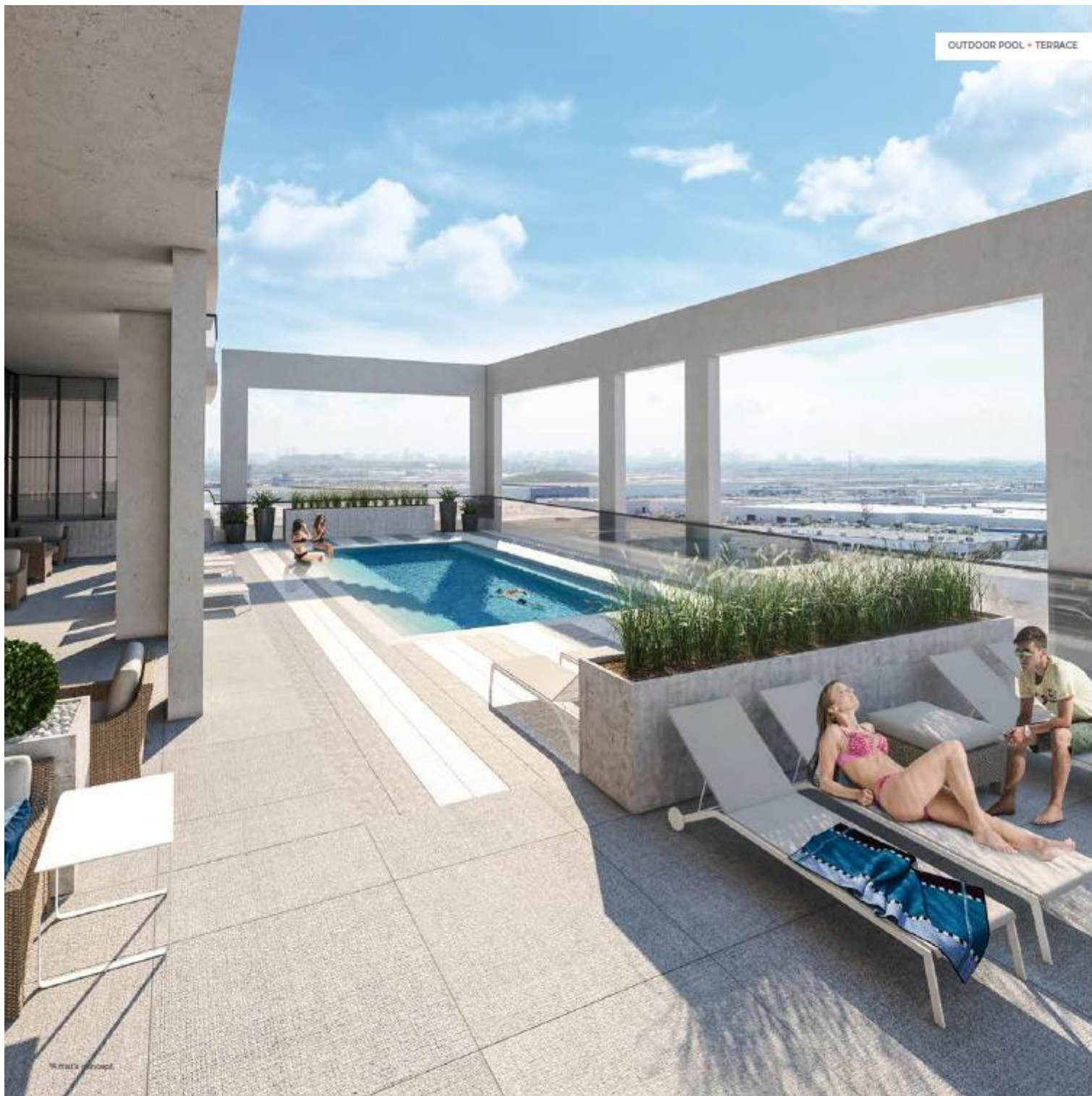
The transition between indoor haven and outdoor oasis has never been easier. This magnificent lounge truly combines the best of both worlds, brought together around a beautiful two-sided fireplace that sets the tone for both of these Zen-like spaces. With opulent views and carefully planned out spaces equipped with soft seating, Charisma has taken serenity to new levels.



POOLSIDE OASIS

OUTDOOR POOL + TERRACE

If basking in the sun and taking a refreshing dip in the pool is how you long to spend your day, the Outdoor Pool and Lounge is the perfect getaway on those dog days of summer. Invite your friends for an afternoon by the pool - there is no better way to relax and catch up. Take your book or tablet outside and sit in the shade, lounge on a recliner and simply enjoy the wonders of summer. If you prefer a much cooler environment, Charisma offers an Indoor Pool Lounge where you can relax and rehydrate. Either way, this poolside retreat affords you and your guests the ultimate in a resort-style setting.



GREENPARK IS DEDICATED to elevating the condominium experience to unprecedented heights. With this aim in mind, Charisma unites a two tiered garden oasis with a city skyline. Connecting the two towers together, this backyard in the sky provides a stunning setting unlike any backyard you have ever seen before. Perched on the 8th floor between Charisma's magnificent towers,



8TH FLOOR GARDEN TERRACE

Art's concept

Greenpark's dedication to innovation and natural beauty are on full display. This picturesque green space offers residents another area to relax and lounge outdoors. This tranquil sanctuary-like setting is complete with tables and chairs making outdoor gatherings with family and friends an easy and popular choice. The stage is set at Charisma, it is time for you to take it all in.



FRESH AIR



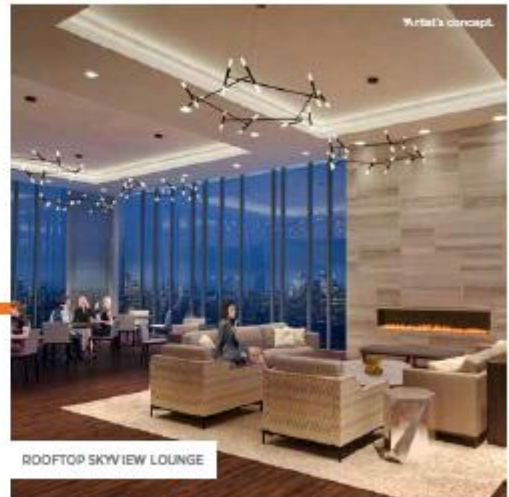
ROOFTOP SKYVIEW LOUNGE

Artist's concept.

A ROOM WITH A VIEW

EAST + WEST PARTY LOUNGES

Charisma's East and West towers boast Rooftop Skyview Lounges, which will elevate any event to new heights. A modern indoor lounge with comfortable seating, indoor bar, and caterer's kitchen is perfect for any party. Whether you are celebrating family, friendships, birthdays or any other momentous occasion, Charisma provides the platform for it all. The party rooms in the east and west towers offer all you could ever imagine including spectacular day and nighttime views. Charisma has anticipated your every expectation with the necessary amenities and a stunning venue for all things worth celebrating. Greenpark understands that a life fulfilled is a life well-lived and well-celebrated.



CHARISMA IS PROUD to showcase what is sure to be one of the most popular and breathtaking amenities - The Rooftop Skyview Terrace. With luxury finishes, carefully crafted spaces and a birds-eye-view of the City from both East and West Towers, these Terraces are sure to make any event extraordinary.

THE HEIGHT



*Artist's concept.

Whether enjoying a day or night in, this Terrace offers the perfect setting with its stunning panoramic views. Plan the perfect event with friends or family, throw something on the grill and enjoy a sunny day or an amazing night under the stars. The Rooftop Terrace at Charisma is one of the many unique places where life takes shape and lasting memories are formed.



ROOFTOP TERRACE

OF LUXURY

THE ULTIMATE LIVING EXPERIENCE



Charisma by Greenpark is community inspired, designed and planned to provide the ultimate lifestyle in mind. A well-balanced life is a combination of work and play. With that in mind, Charisma created a beautifully designed green space for countless hours of enjoyment. The brilliantly landscaped 1.6-acre public park is positioned on the property with easy access and has unlimited potential

for activities such as outdoor yoga, walking, playing a game of basketball or simply appreciating the outdoors. There is plenty of space to enjoy your favourite pastime alone or with your family. The park at Charisma is part of the carefully crafted landscape - a place you can be proud to share. It is a true urban oasis where a tranquil yet active lifestyle is only moments away.



FUTURE
RESIDENTIAL

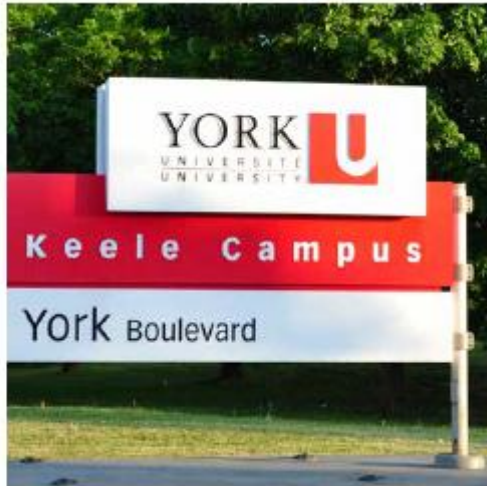
FUTURE PARK

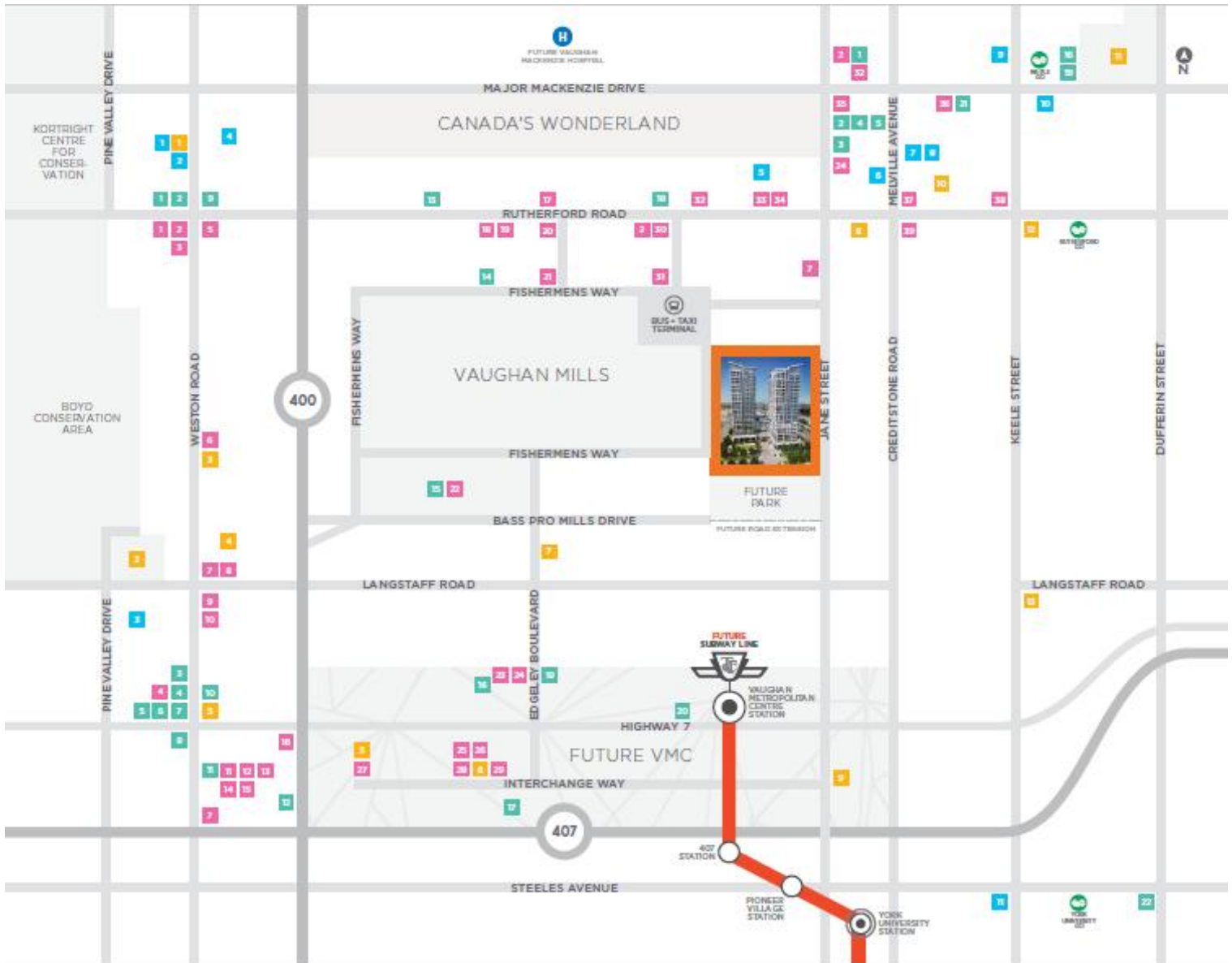
*Artist's concept.



IN THE
CENTRE
OF IT
ALL

At Charisma, not only do neighbourhood amenities already exist, they are in marvelous abundance. You are literally steps away from one of Canada's premier outlets in Vaughan Mills and at the very center of a neighbourhood which is highlighted by premiere parks, schools, theatres, restaurants and so much more. The community surrounding your home at Charisma truly has everything you need to lead a vibrant modern lifestyle.





DINING + ENTERTAINMENT

- 1. Munchies
- 2. Startucks
- 3. Tardis Jack's Muskoka Grill
- 4. La Paloma Cakes & Cakes
- 5. Swiss Chai's Rotisserie & Grill
- 6. Mandarini
- 7. Tami Horvath
- 8. Coluca Gelato
- 9. Sloo's Pizzeria
- 10. Nova Recorona
- 11. Jack Asson's Bar & Grill
- 12. Max's Grill & Bar
- 13. Earl's Kitchen - Bar
- 14. Spoon & Fork
- 15. Sheela's Jari's
- 16. Crispex Creations
- 17. The Keg Steakhouse & Bar
- 18. Boston Pizza
- 19. Monina's BBQ & Bar
- 20. Serrano Grill
- 21. Yeh's Teppanyaki & Sushi
- 22. Canyon Creek
- 23. Guacada Burritos & Tacos
- 24. St. Louis Bar & Grill
- 25. Yuk Ya's
- 26. Our Thai Restaurant & Cakes
- 27. Dave & Buster's
- 28. Ivy Social Club
- 29. Luby Club
- 30. Fushi
- 31. Marcello's Pizzeria
- 32. McDonald's
- 33. AllStar Wings & Tacos
- 34. Nino DiVerno Bakery
- 35. Kelsey's Original Roadhouse
- 36. St. Phillipa Bakery
- 37. Denny's
- 38. Dairy Queen
- 39. WGGZ Stadium Bar

SHOPPING

- 1. Longo's
- 2. Shoppers Drug Mart
- 3. Beer Store
- 4. LCBO
- 5. Fortinos
- 6. Chapters
- 7. SmartCentres Woodbridge
- 8. Nations Fresh Food
- 9. No Frills
- 10. The Home Depot
- 11. RioCan Coliseum Centre
- 12. Costco Wholesale
- 13. Coppin's Fresh Market
- 14. Dollarama
- 15. The Village at Vaughan Mills
- 16. Lowe's
- 17. Ikea
- 18. Canadian Tire
- 19. Walmart SuperCentre
- 20. Home Outfitters
- 21. Nasa's Emporium
- 22. Rocan Market Place

HEALTH + RECREATION

- 1. Willow Village Skate Park
- 2. The National Golf Club of Canada
- 3. Anytime Fitness
- 4. Vaughan Spasaplex
- 5. GoodLife Fitness
- 6. Putting Edge
- 7. GYM Soccer Club & Lounge
- 8. Sky Zone Trampoline Park
- 9. Vaughan Iceplex
- 10. The Sports Village
- 11. Eagle's Nest Golf Club
- 12. Yoga Tree
- 13. Vaughan Spasaplex II

EDUCATION + COMMUNITY

- 1. Willow Village Community Centre
- 2. St. Jean Baptist Catholic High School
- 3. Chancetlor Community Centre
- 4. Willow Woods Public School
- 5. Julliard High School
- 6. Maple High School
- 7. Blessed Trinity Catholic Elementary School
- 8. Maple Creek Public School
- 9. Maple Community Centre
- 10. Vaughan Day Hall
- 11. York University

VMC SUBWAY STATION

DWA
Designated Waiting Area

DWA
Designated Waiting Area

VAUGHAN METROPOLITAN CENTRE
METROPOLITAN CENTRE

Elevator

← Elevator



Ward's concept

THE WORLD AT YOUR DOORSTEP



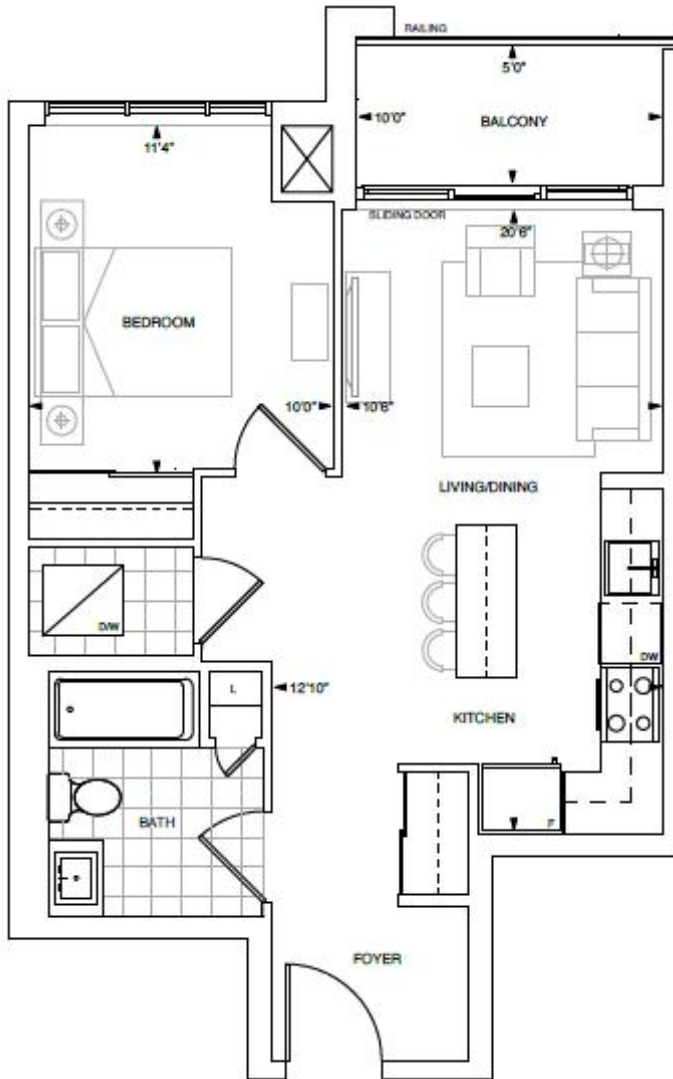
One of the defining elements of urban living is transportation. Charisma is positioned to be a transit haven for all would-be commuters as it is perfectly positioned minutes away from the 400 series highways, Viva bus line and the new

TTC bus transit and subway line. Whether it is about your daily commute or your weekend adventures, getting there is made convenient at Charisma because we know it is not just about where you are going, but how you get there.

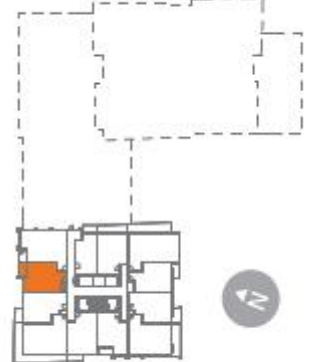


TOWER
CHARISMA
SUITES

1 BEDROOM | Interior 590 Sq.Ft. • Exterior 50 Sq.Ft. • Total 640 Sq.Ft.



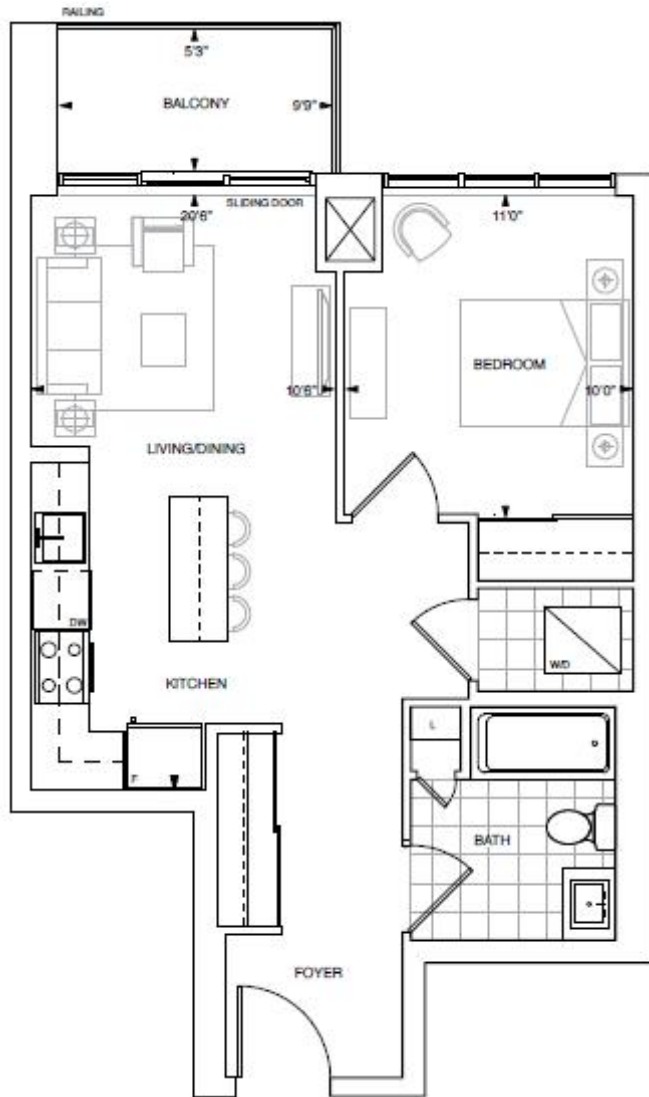
CHARISMA SERIES
10' CEILING | FLOOR 25
TOWER SERIES
9' CEILING | FLOOR 8-12 & 14-24



Dimensions, specifications, layout, location of materials and fixtures, tile floor patterns and architectural detailing (including window size and location and door size, location and swing) are approximate only and are subject to change or modifications, without notice. Actual usable floor space varies from stated floor area. Orientation of suite may be reversed and Purchaser agrees to accept same. Balcony, terrace and patio are exclusive common elements shown for display purposes only and location and size are subject to change without notice. All illustrations are artist concepts only. The provisions of Schedule "K" of the Agreement, including Section C and S8 apply to this Schedule. E & D.

A 596

1 BEDROOM | Interior 596 Sq.Ft. • Exterior 50 Sq.Ft. • Total 646 Sq.Ft.

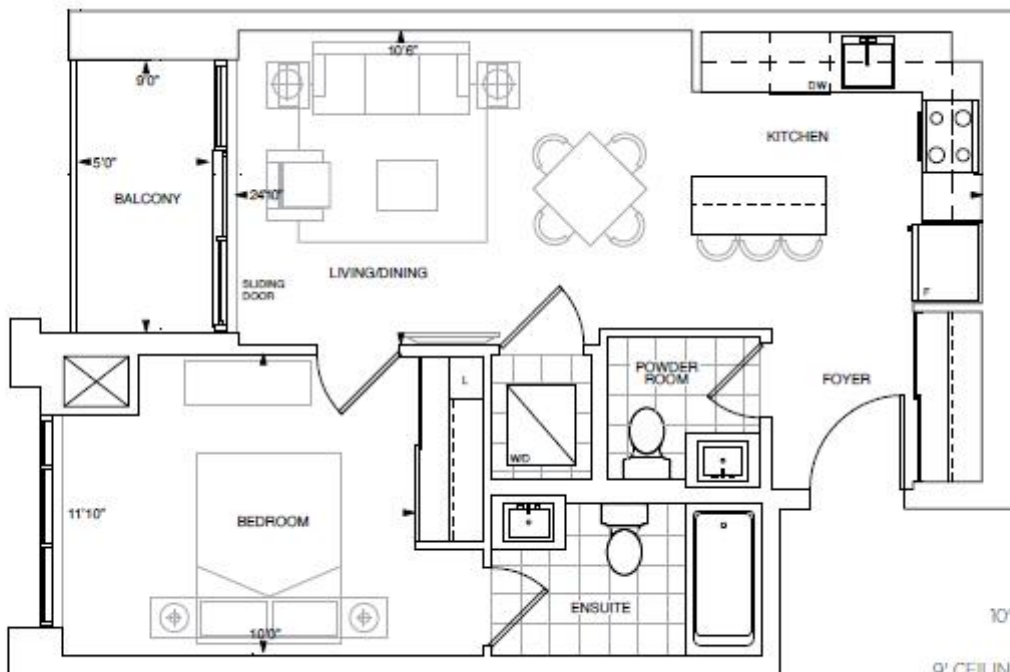


CHARISMA SERIES
10' CEILING | FLOOR 6, 7 & 25
TOWER SERIES
9' CEILING | FLOOR 2-5, 8-12 & 14-24

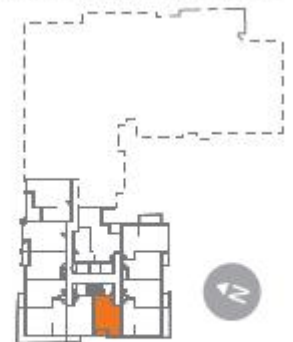


Dimensions, specifications, layout, location of materials and fixtures, tile floor patterns and architectural detailing, including window size and location and door size, location and swing, are approximate only and are subject to change or modifications, without notice. Actual usable floor space varies from stated floor area. Orientation of unit may be reversed and Purchaser agrees to accept same. Balconies, terraces and patios are actual use common elements shown for display purposes only and location and size are subject to change without notice. All illustrations are artist concepts only. The provisions of Schedule "B" of the Agreements, including Section C and M apply to this Schedule. C & D.

1 BEDROOM | Interior 615 Sq.Ft. • Exterior 42 Sq.Ft. • Total 657 Sq.Ft.



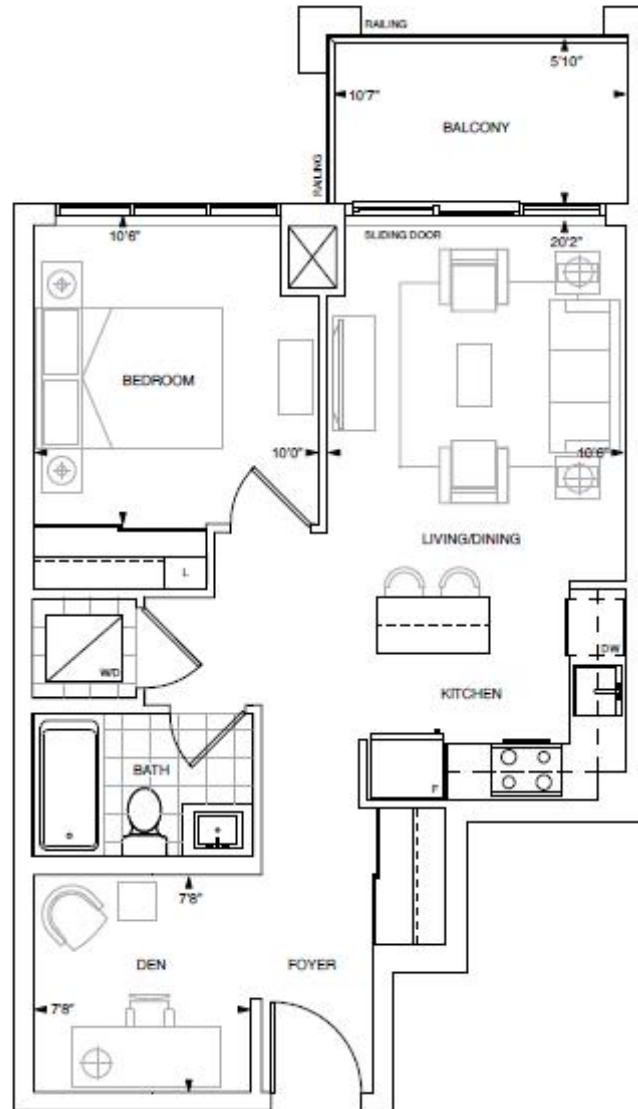
CHARISMA SERIES
10' CEILING | FLOOR 6, 7 & 25
TOWER SERIES
9' CEILING | FLOOR 2-5, 8-12 & 14-24



Dimensions, specifications, layout, location of materials and fixtures, tile floor patterns and architectural detailing (including window size and location and door size, location and swing) are approximate only and are subject to change or modification, without notice. Actual usable floor space varies from stated floor area. Orientation of walls may be reversed and Purchaser agrees to accept same. Balconies, terraces and patios are enclosed use common elements shown for display purposes only and location and size are subject to change without notice. All illustrations are artistic conceptions. The provisions of Schedule "A" of this Agreement, including Section 5 and 30 apply to this Schedule "I" & C.C.

B
618

1 BEDROOM + DEN | Interior 618 Sq.Ft. • Exterior 61 Sq.Ft. • Total 679 Sq.Ft.

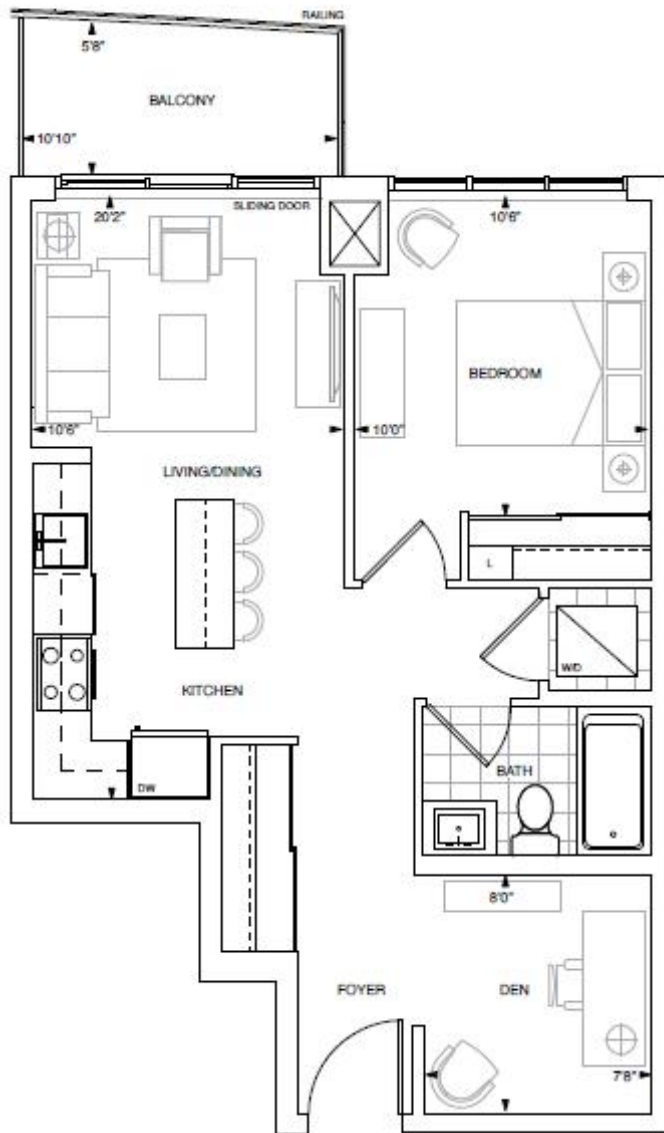


CHARISMA SERIES
10' CEILING | FLOOR 6-7 & 25
TOWER SERIES
9' CEILING | FLOOR 2-5, 8-12 & 14-24



Dimensions, specifications, layout, location of mechanical and fixtures, tile floor patterns and architectural detailing (including window size and location and door size, location and swing) are approximate only and are subject to change or modifications, without notice. Actual usable floor space varies from stated floor area. Orientation of site may be reversed and Purchaser agrees to accept same. Balconies, terraces and patios are actual in-use common elements shown for display purposes only and location and size are subject to change without notice. All dimensions are prior concept only. The provisions of Schedule "A" of the Agreement, including Sections C and 38 apply to the Schedule L & DL.

1 BEDROOM + DEN | Interior 622 Sq.Ft. • Exterior 57 Sq.Ft. • Total 679 Sq.Ft.



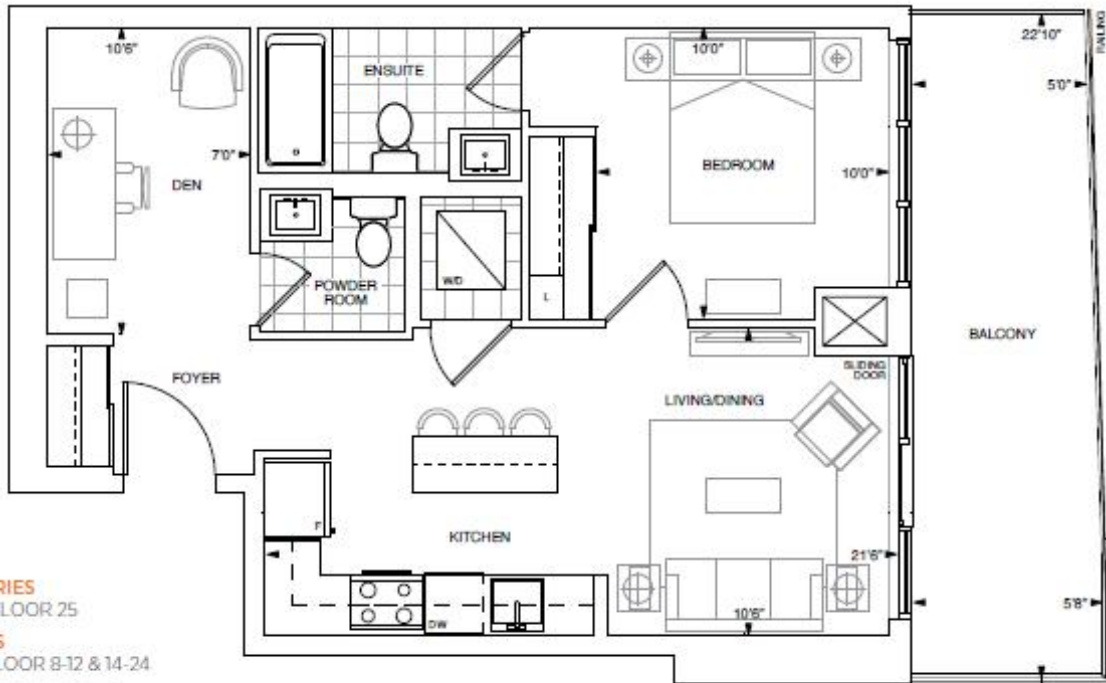
CHARISMA SERIES
10' CEILING | FLOOR 6-7 & 25
TOWER SERIES
9' CEILING | FLOOR 2-5, 8-12 & 14-24



Dimensions, specifications, layouts, location of materials and fixtures, tile floor patterns and architectural detailing (including window size and location and door size, location and swing) are approximate only and are subject to change or modifications without notice. Actual usable floor space varies from stated floor area. Orientation of site may be reversed and Purchaser agrees to accept same. Balcony, terrace and patio are exclusive use common elements shown for display purposes only and location and size are subject to change without notice. All illustrations are artist concepts only. The provisions of Schedule "K" of the Agreement, including Sections 5 and 38 apply to the Schedule 1, 4 & 5.

B 635

1 BEDROOM + DEN | Interior 635 Sq.Ft. • Exterior 115 Sq.Ft. • Total 750 Sq.Ft.



CHARISMA SERIES
10' CEILING | FLOOR 25
TOWER SERIES
9' CEILING | FLOOR 8-12 & 14-24



Dimensions, specifications, layout, location of riser and fixtures, tile floor patterns and architectural detailing (including window size and location and door size, location and swing) are approximate only and are subject to change or modifications, without notice. Actual usable floor space varies from stated floor area. Direction of sale may be reversed and Purchaser agrees to accept same. Balconies, terraces and patios are shown as common elements shown for display purposes only and location and size are subject to change, without notice. All illustrations are artistic concepts only. The provisions of Schedule "N" of the Agreement, including Section 6 and 30 apply to this Schedule. C & D.

1 BEDROOM + DEN | Interior 640 Sq.Ft. • Exterior 50 Sq.Ft. • Total 690 Sq.Ft.



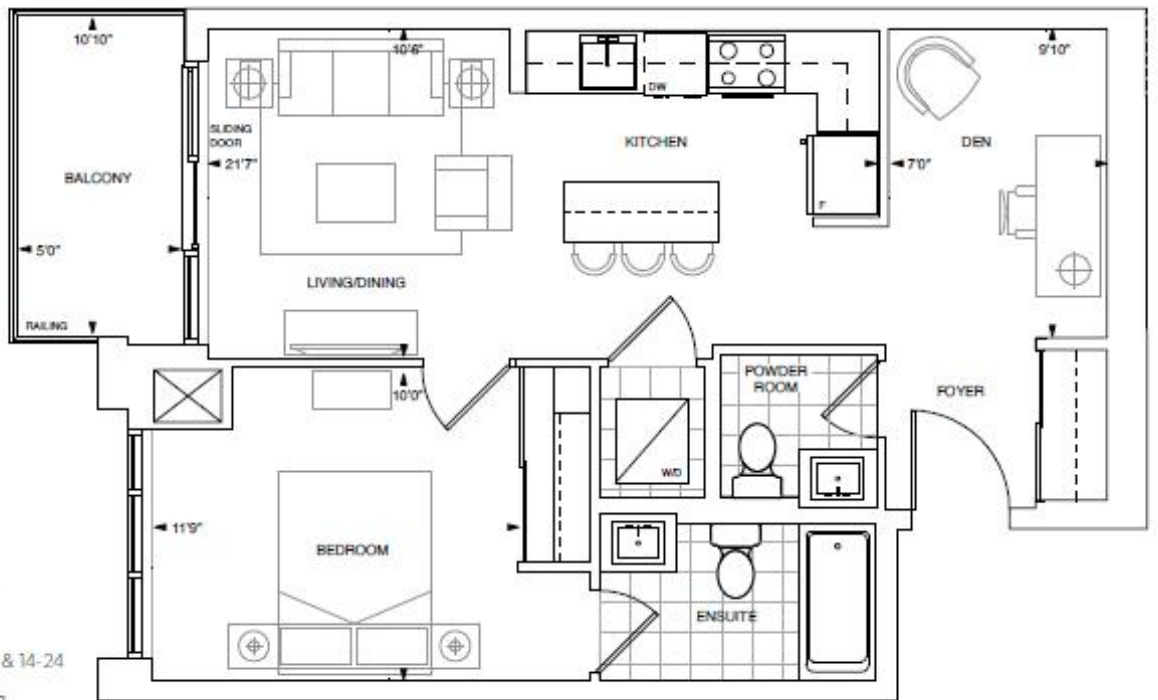
CHARISMA SERIES
10' CEILING | FLOOR 6 & 7
TOWER SERIES
9' CEILING | FLOOR 2-5



Dimensions, specifications, layout, location of materials and fixtures, all floor patterns and architectural detailing (including window size and location and door size, location and swing) are approximate only and are subject to change or modification, without notice. Actual usable floor space varies from scaled floor plan. Dimension of site may be revised and Purchaser agrees to accept same. Balconies, terraces and patios are exclusive use common elements shown for display purposes only and location and size are subject to change without notice. All illustrations are artistic concepts only. The provisions of Schedule "A" of the Agreement, including Section 2 and 30 apply to this Schedule "E" & G.C.

B 655

1 BEDROOM + DEN | Interior 655 Sq.Ft. • Exterior 50 Sq.Ft. • Total 705 Sq.Ft.

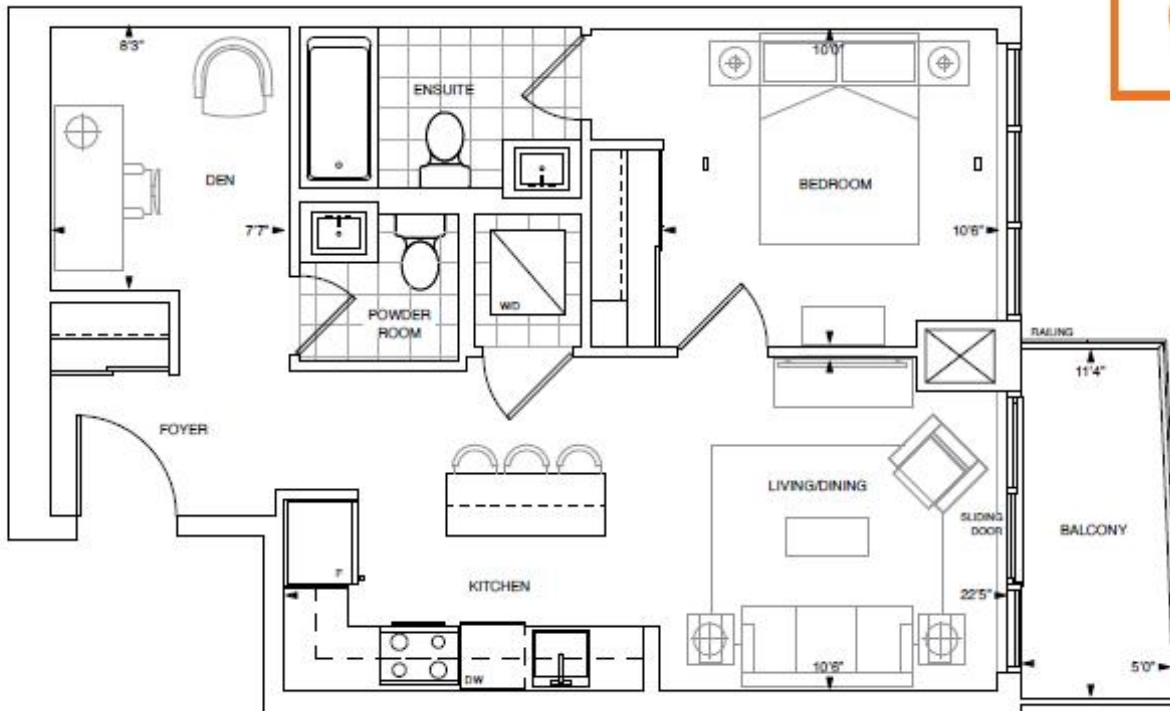


CHARISMA SERIES
10' CEILING | FLOOR 25
TOWER SERIES
9' CEILING | FLOOR 9-12 & 14-24

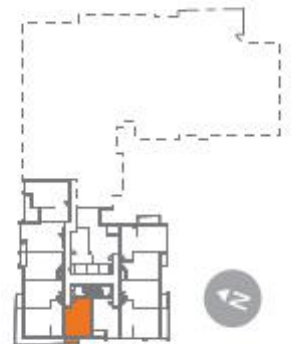


Dimensions, specifications, layout, location of materials and finishes, tile floor patterns and architectural detailing (including window size and location and door size, location and swing) are approximate only and are subject to change or modifications, without notice. Actual usable floor space varies from stated floor area. Determination of suitability may be reviewed and Purchaser agrees to accept same. Balconies, terraces and patios are exclusive use common elements shown for display purposes only and location and size are subject to change without notice. All illustrations are artist concepts only. The provisions of Schedule "B" of the Agreement, including Section C and D apply to this Schedule. E & G.

1 BEDROOM + DEN | Interior 663 Sq.Ft. • Exterior 53 Sq.Ft. • Total 716 Sq.Ft.



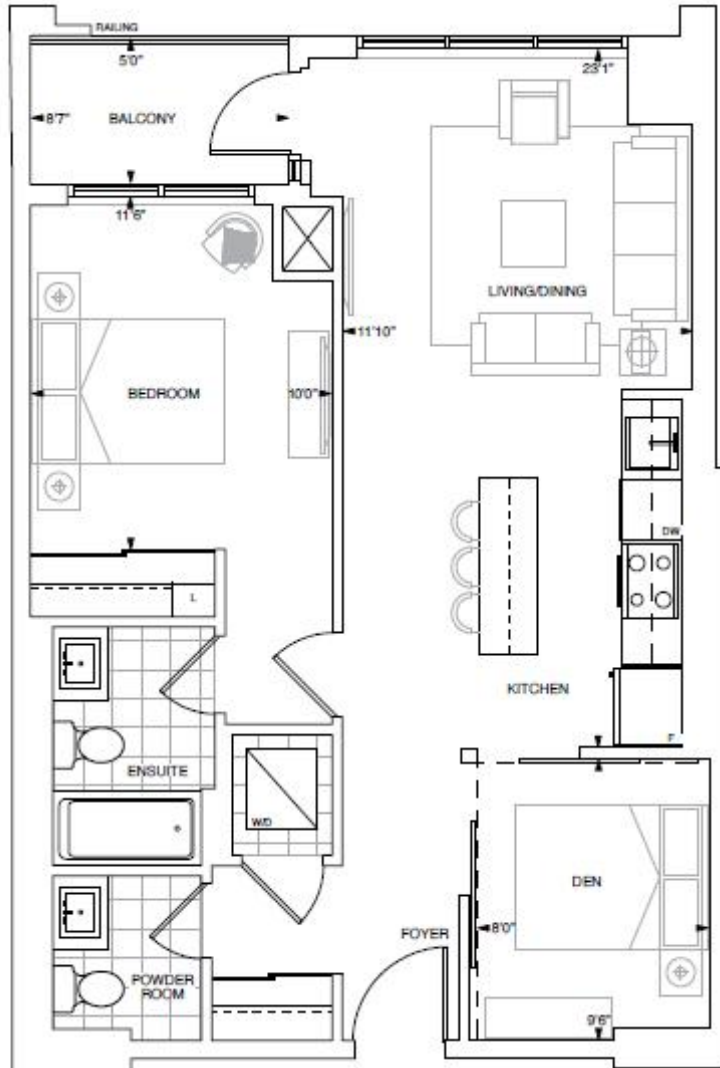
CHARISMA SERIES
10' CEILING | FLOOR 6, 7 & 25
TOWER SERIES
9' CEILING | FLOOR 2-5, 8-12 & 14-24



Dimensions, specifications, layout, location of materials and fixtures, floor patterns and architectural detailing (including window size and location, and door size, location and swing) are approximate only and are subject to change or modification without notice. Actual usable floor space varies from used floor area. Orientation of unit may be reversed and Purchaser agrees to accept same. Balcony, terrace and patio are exclusive use common elements shown for display purposes only and location and size are subject to change without notice. All illustrations are artist concepts only. The provisions of Schedule "A" of the Agreement, including Section C and 30 apply to this Schedule. E & C.C.

B 770

1 BEDROOM + DEN + POWDER | Interior 770 Sq.Ft. • Exterior 42 Sq.Ft. • Total 812 Sq.Ft.

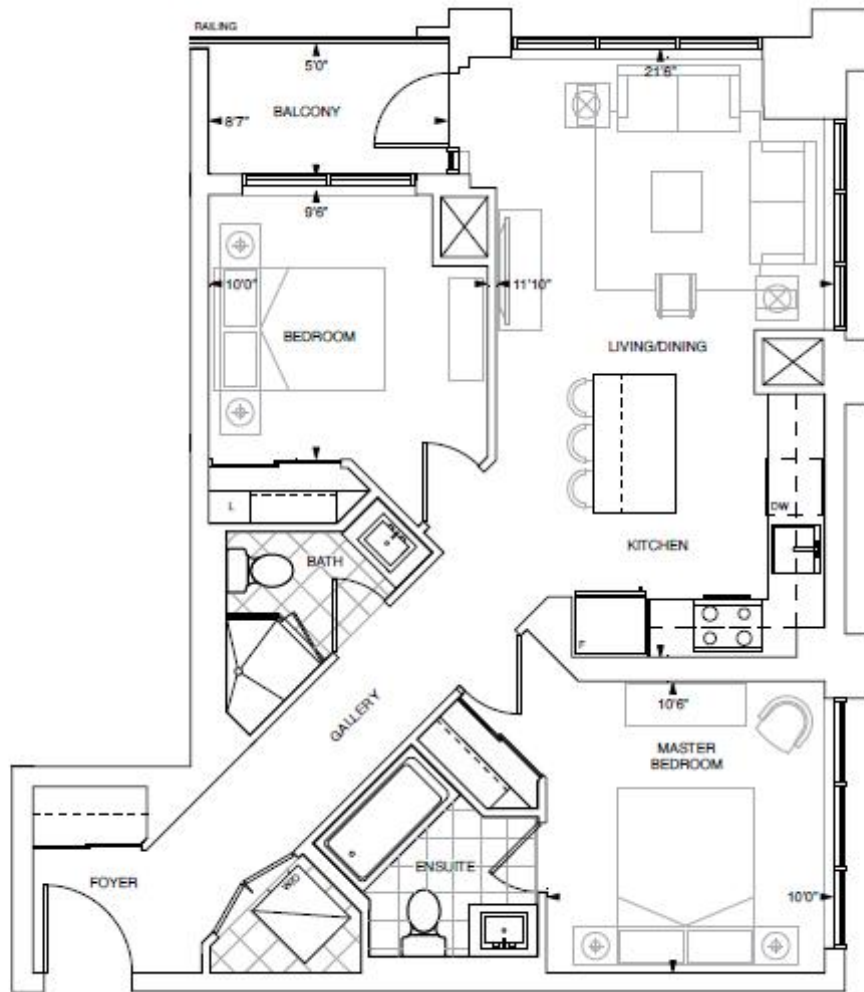


CHARISMA SERIES
10' CEILING | FLOOR 6 & 7
TOWER SERIES
9' CEILING | FLOOR 2-5

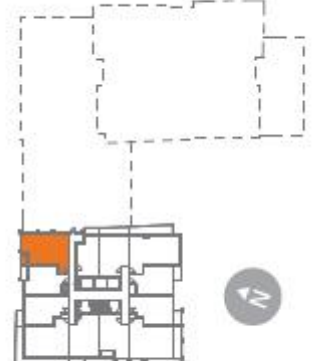


Dimensions, specifications, layout, location of materials and fixtures, tile floor patterns and architectural detailing (including window size and location and door size, location and swing) are approximate only and are subject to change or modification, without notice. Actual usable floor space varies from stated floor area. Dimension of suite may be extended and Purchaser agrees to accept same. Balconies, terraces and patios are actual view corridors/elements shown for display purposes only and location and size are subject to change without notice. All illustrations are artistic concepts only. The provisions of Schedule "A" of the Agreement, including Section 6 and 30 apply to the Schedule, 1 & 2.

2 BEDROOM | Interior 808 Sq.Ft. • Exterior 43 Sq.Ft. • Total 851 Sq.Ft.



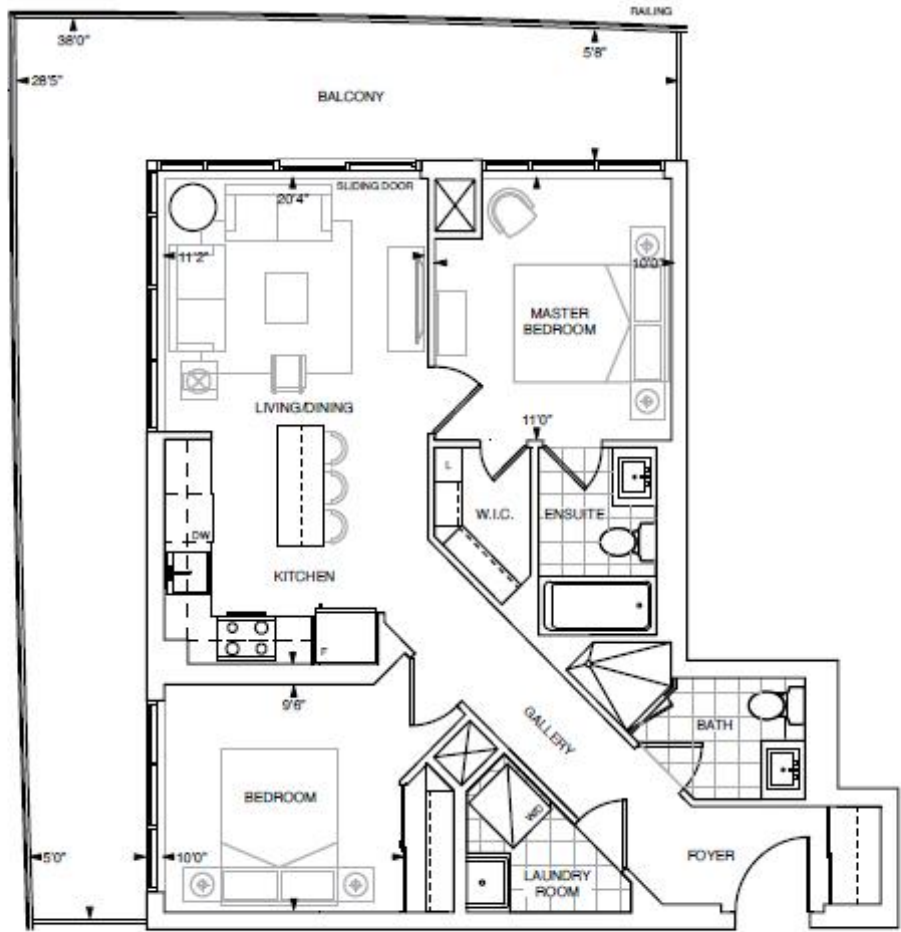
CHARISMA SERIES
10' CEILING | FLOOR 25
TOWER SERIES
9' CEILING | FLOOR 8-12 & 14-24



Dimensions, specifications, layout, location of materials and fixtures, all floor plans and architectural drawings including window size and location, and door size, location and swing, are approximate only and are subject to change or modifications, without notice. A final usable floor space varies from issued floor plan. Orientation of unit may be reviewed and Purchaser agrees to accept same. Balconies, terraces and patios are exclusive use common elements shown for display purposes only and location and size are subject to change without notice. All illustrations are artistic concepts only. The provisions of Schedule "B" of this Agreement, including Sections 4 and 30 apply to this Schedule "C" & G.C.



2 BEDROOM | Interior 817 Sq.Ft. • Exterior 345 Sq.Ft. • Total 1,162 Sq.Ft.



CHARISMA SERIES
10' CEILING | FLOOR 6-7 & 25
TOWER SERIES
9' CEILING | FLOOR 2-5, 8-12 & 14-24

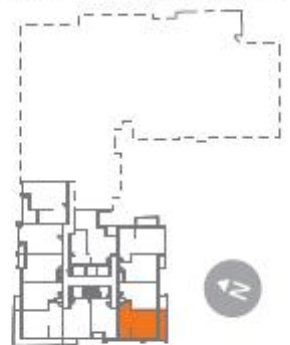


Dimensions, specifications, layout, location of materials and fixtures, tile floor patterns and architectural detailing (including window size and location and door size, location and swing) are approximate only and are subject to change or modifications, without notice. Actual usable floor space varies from stated floor area. Deviation of suite may be required and Purchaser agrees to accept same. Balconies, terraces and patios are exclusive of common elements shown for display purposes only and location and size are subject to change, without notice. All Illustrations are artist conceptions only. The provisions of Schedule "N" of the Age-Related, including Section C and 30 apply to the Schedule, E & G.

2 BEDROOM | Interior 838 Sq.Ft. • Exterior 135 Sq.Ft. • Total 973 Sq.Ft.



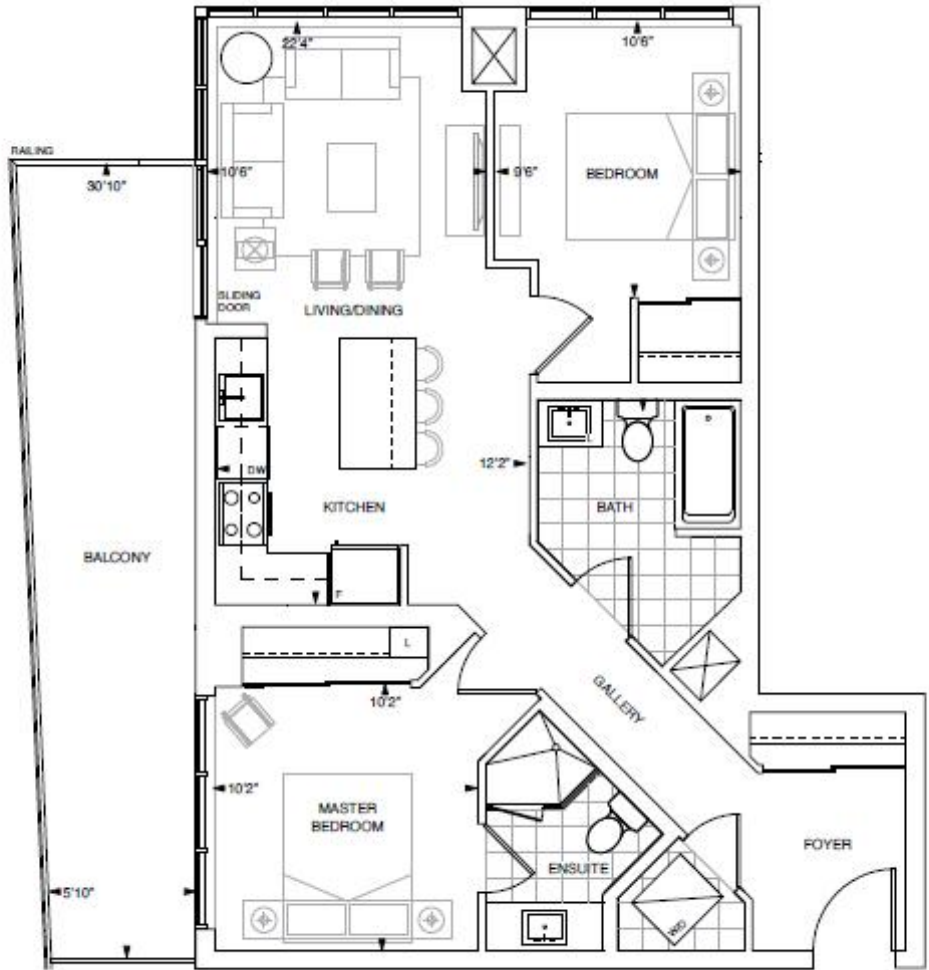
CHARISMA SERIES
10' CEILING | FLOOR 6-7 & 25
TOWER SERIES
9' CEILING | FLOOR 2-5, 8-12 & 14-24



Dimensions, specifications, layout, location of materials and fixtures, all floor patterns and architectural detailing (including window size and location and door size, location and swing) are approximate only and are subject to change or modification without notice. Actual usable floor space varies from stated floor area. Dimension of site may be measured and Purchaser agrees to accept same. Balconies, terraces and patios are exclusive use common elements shown for display purposes only and location and size are subject to change without notice. All illustrations are artist concepts only. The provisions of Schedule "A" of the Agreement, including Section 6 and 30 apply to this Schedule. L & D.C.



2 BEDROOM | Interior 874 Sq.Ft. • Exterior 200 Sq.Ft. • Total 1,074 Sq.Ft.



CHARISMA SERIES
10' CEILING | FLOOR 6-7 & 25
TOWER SERIES
9' CEILING | FLOOR 2-5, 8-12 & 14-24

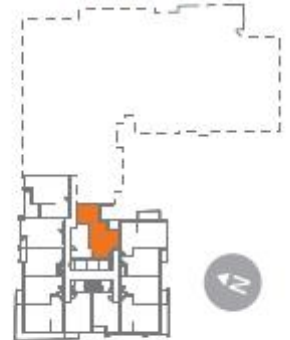


Dimensions, specifications, layout, location of materials and finishes, tile floor patterns and architectural detailing including window, door location and door size, location and swing, are approximate only and are subject to change or modifications, without notice. Actual usable floor space varies from stated floor area. Dimension of unit may be reviewed and Purchaser agrees to accept same. Balconies, terraces and patios are included in unit common elements shown for display purposes only and location and size are subject to change without notice. All illustrations are artist concepts only. The provisions of Schedule "A" of the Agreement, including Section C and 30 apply to this Schedule. E & D.C.

2 BEDROOM | Interior 886 Sq.Ft. • Exterior 60 Sq.Ft. • Total 946 Sq.Ft.



CHARISMA SERIES
10' CEILING | FLOOR 6
TOWER SERIES
9' CEILING | FLOOR 2-5 & 7



Dimensions, specifications, layout, location of materials and fixtures, all floor patterns and architectural detailing (including window size and location and door size, location and swing) are approximate only and are subject to change or modification, without notice. Actual usable floor space varies from stated floor area. Orientation of sale may be reversed and Purchaser agrees to accept same. Balconies, terraces and patios are enclosed use common elements shown for display purposes only and location and size are subject to change without notice. All illustrations are used conceptually only. The provisions of Schedule "G" of this Agreement, including Section 5 and 30 apply to this Schedule, T, & D.C.

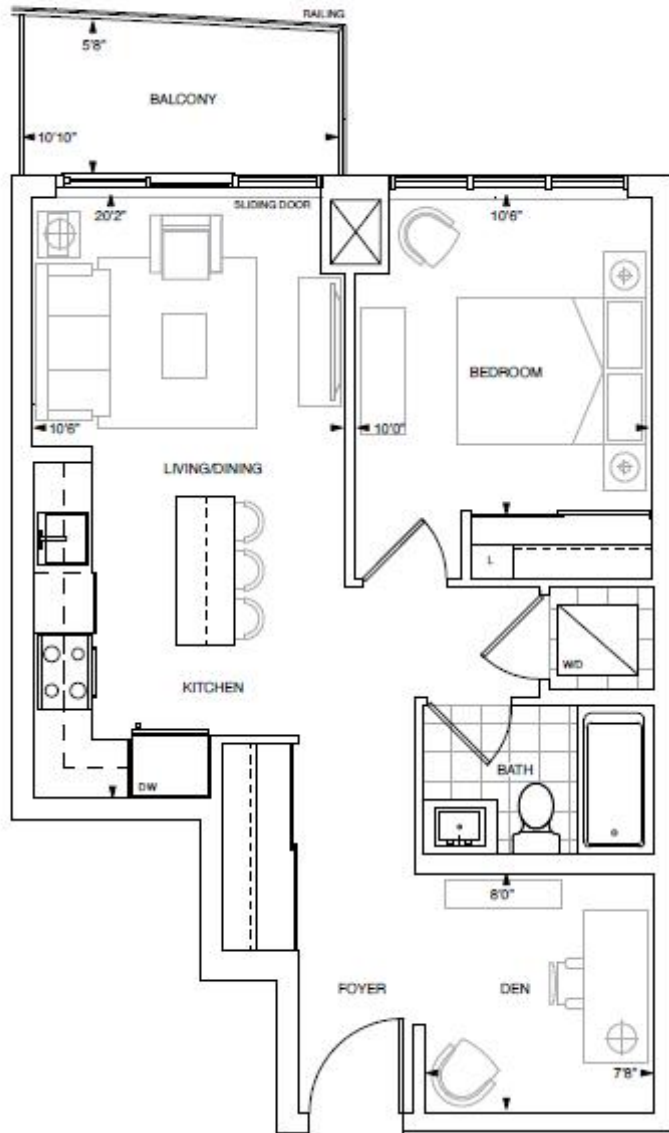


PENT-
HOUSE
SUITES



B 622

1 BEDROOM + DEN | Interior 622 Sq.Ft. • Exterior 57 Sq.Ft. • Total 679 Sq.Ft.

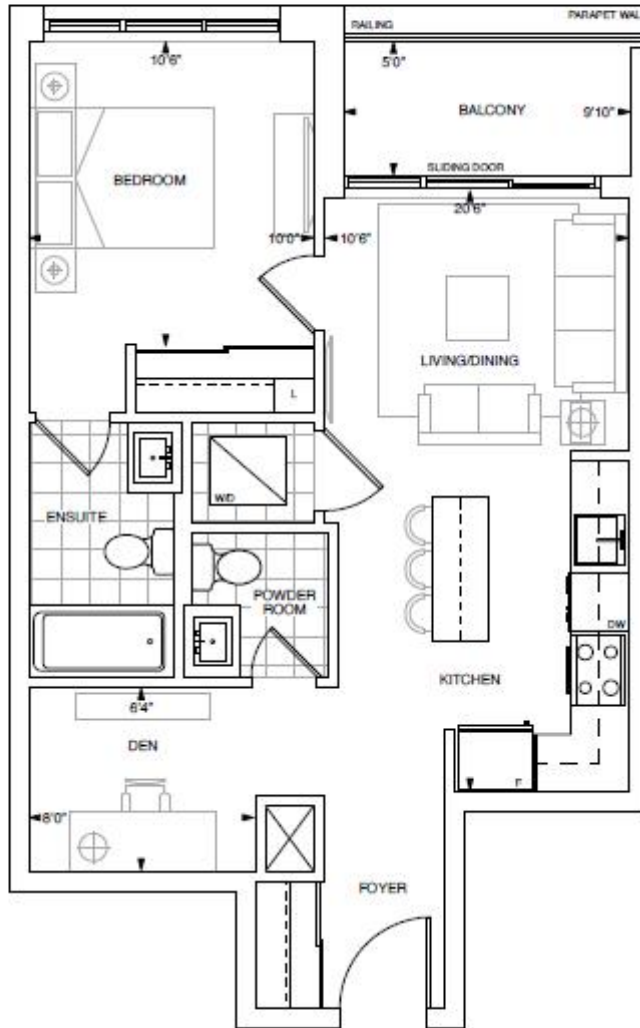


PENTHOUSE
10' CEILING | FLOOR 26-27

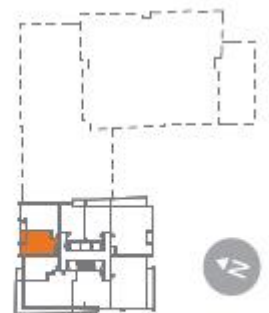


Dimensions, specifications, layout, location of materials and finishes, tile floor patterns and architectural detailing (including window sizes and location and door size, location and swing) are approximate only and are subject to change or modifications, without notice. Actual usable floor space varies from stated floor area. Orientation of units may be reversed and Purchaser agrees to accept same. Balconies, terraces and patios are exclusive common elements shown for display purposes only and location and size are subject to change without notice. All illustrations are artist concepts only. The provisions of Schedule "B" of the Agreement, including Section 6 and 30 apply to this Schedule. E. & O.E.

1 BEDROOM + DEN | Interior 626 Sq.Ft. • Exterior 48 Sq.Ft. • Total 674 Sq.Ft.



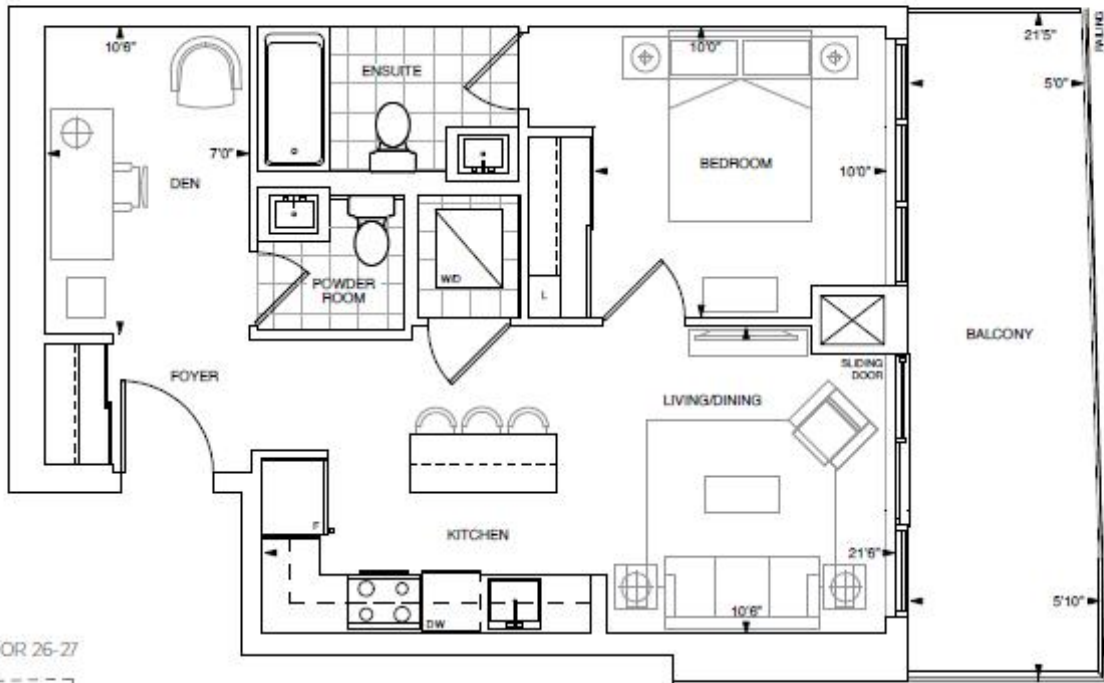
PENTHOUSE
10' CEILING | FLOOR 26-27



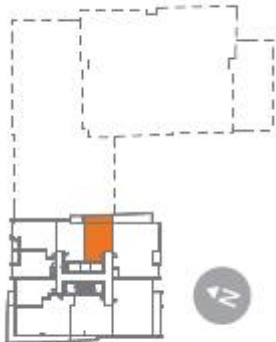
Dimensions, specifications, layout, location of materials and fixtures, all floor patterns and architectural detailing (including window size and location and door size, location and swing) are approximate only and are subject to change or modification without notice. Actual usable floor space varies from stated floor area. Dimension of site may be revised and Purchaser agrees to accept same. Balconies, terraces and patios are exclusive use common elements shown for display purposes only and location and size are subject to change without notice. All illustrations are artistic concepts only. The provisions of Schedule "B" of this Agreement, including Section 5 and 30 apply to this Schedule. 1 & 2.C.

B
635

1 BEDROOM + DEN | Interior 635 Sq.Ft. • Exterior 115 Sq.Ft. • Total 750 Sq.Ft.

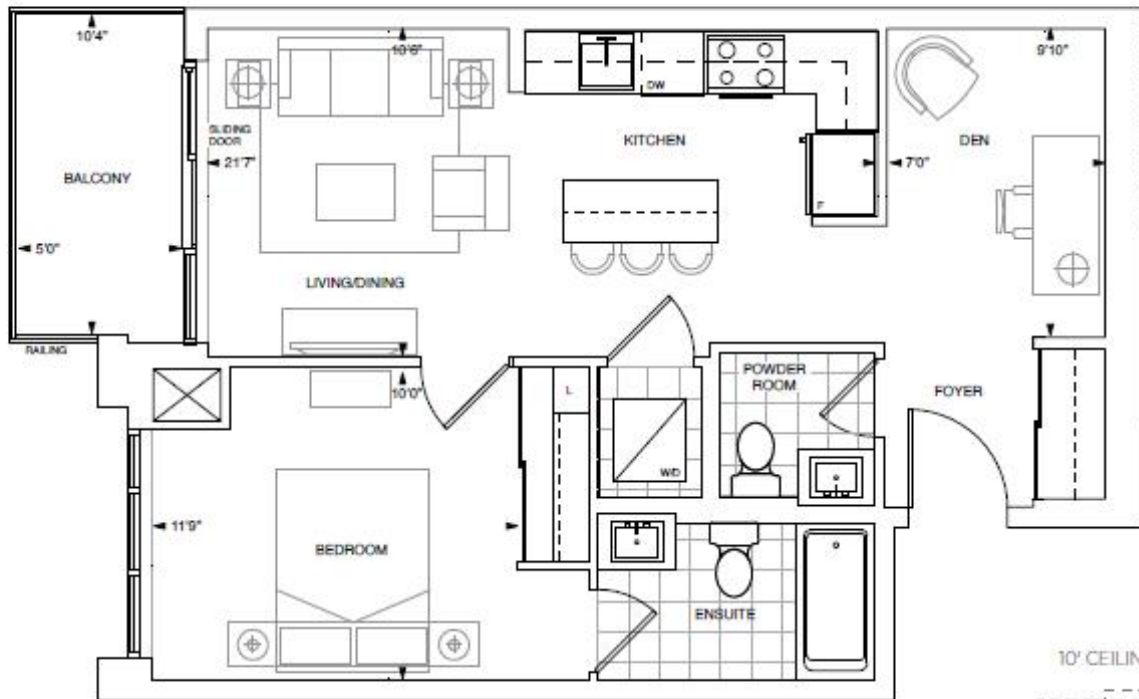


PENTHOUSE
10' CEILING | FLOOR 26-27

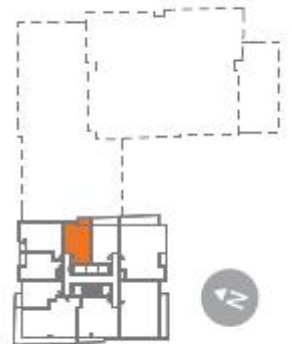


Dimensions, specifications, layout, location of materials and fixtures, tile floor patterns and architectural detailing including window, slab and location and door size, location and swing are approximate only and are subject to change or modifications, without notice. Actual usable floor space varies from stated floor area. Direction of sale may be reversed and Purchaser agrees to accept same. Balconies, terraces and patios are exclusive use common elements shown for display purposes only and location and size are subject to change without notice. All illustrations are artist conceptions only. The provisions of Schedule "A" of this Agreement, including Section C and "B" apply to this Schedule. C & D.

1 BEDROOM + DEN | Interior 655 Sq.Ft. • Exterior 50 Sq.Ft. • Total 705 Sq.Ft.



PENTHOUSE
10' CEILING | FLOOR 26-27



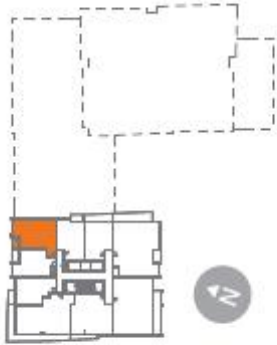
Dimensions, specifications, layout, location of materials and fixtures, all floor patterns and architectural detailing (including window size and location, and door size, location and swing) are approximate only and are subject to change or modifications without notice. Actual usable floor space varies from stated floor area. Orientation of unit may be reversed and Purchaser agrees to accept same. Balcony, terraces and patios are exclusive use common elements shown for display purposes only and location and size are subject to change without notice. All illustrations are artist concepts only. The provisions of Schedule "W" of this Agreement, including Sections 5 and 30, apply to this Schedule. L & C.C.



2 BEDROOM | Interior 808 Sq.Ft. • Exterior 40 Sq.Ft. • Total 848 Sq.Ft.



PENTHOUSE
10' CEILING | FLOOR 26-27

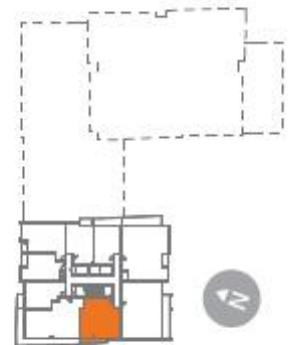


Dimensions, specifications, layout, location of materials and fixtures, tile floor patterns and architectural detailing including window size and location and door size, location and swing are approximate only and are subject to change or modifications, without notice. Actual usable floor space varies from stated floor area. Orientation of suite may be reversed and Purchaser agrees to accept same. Balconies, terraces and patios are exclusive use common elements shown for display purposes only and location and size are subject to change without notice. All illustrations are artist concepts only. The provisions of Schedule "A" of this Agreement, including Section C and D apply to this Schedule. C & D.

2 BEDROOM | Interior 989 Sq.Ft. • Exterior 93 Sq.Ft. • Total 1,082 Sq.Ft.



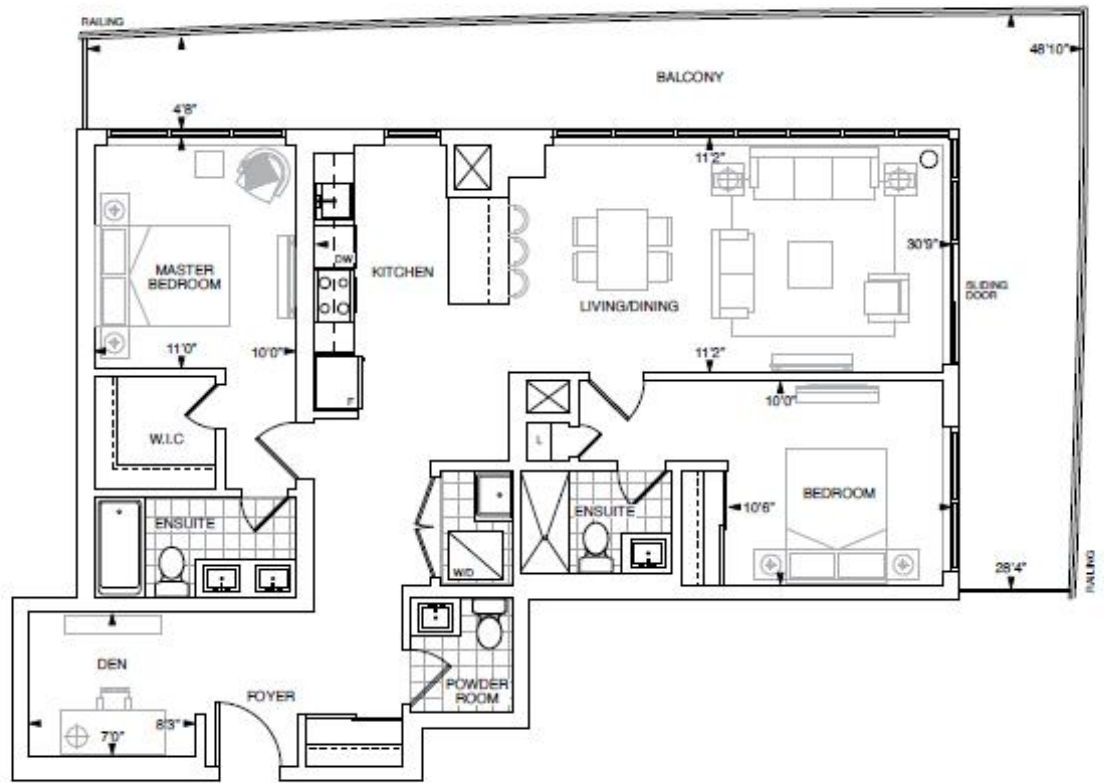
PENTHOUSE
10' CEILING | FLOOR 26-27



Dimensions, specifications, layout, location of materials and fixtures, all floor patterns and architectural detailing (including window size and location and door size, location and swing) are approximate only and are subject to change or modifications, without notice. Actual usable floor space varies from stated floor area. Orientation of unit may be reversed and Purchaser agrees to accept same. Balconies, terraces and patios are enclosed use common elements shown for display purposes only and location and size are subject to change without notice. All illustrations are artist concepts only. The provisions of Schedule "A" of this Agreement, including Sections 4 and 30 apply to this Schedule. L & C.C.

D 1191

2 BEDROOM + DEN + POWDER | Interior 1,191 Sq.Ft. • Exterior 399 Sq.Ft. • Total 1,590 Sq.Ft.

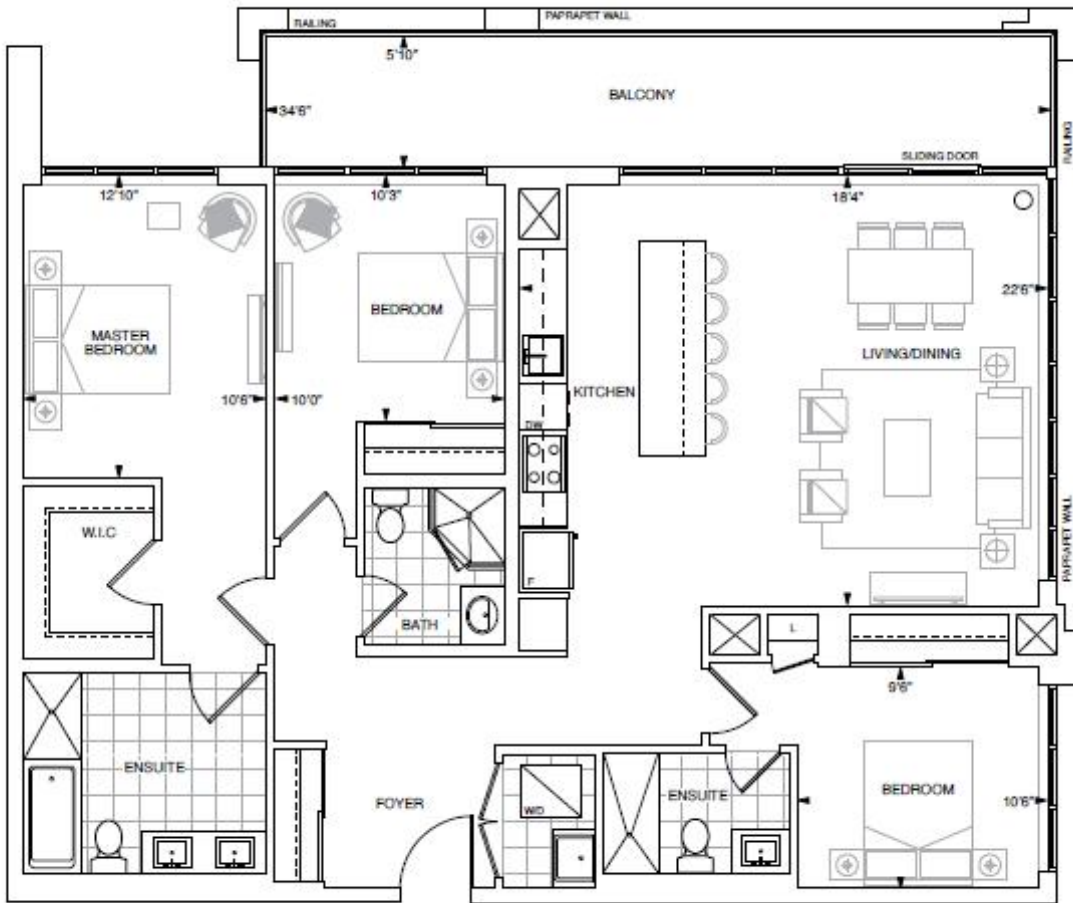


PENTHOUSE
10' CEILING | FLOOR 26-27

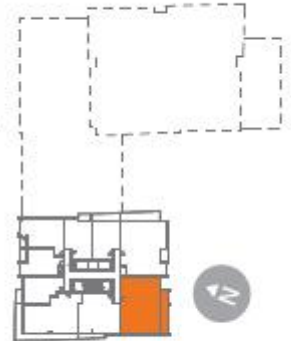


Dimensions, specifications, layout, location of materials and fixtures, tile floor patterns and architectural detailing (including window size and location and door size, location and swing) are approximate only and are subject to change or modifications, without notice. Actual usable floor space varies from stated floor area. Optimization of use may be reviewed and Purchaser agrees to accept same. Balconies, terraces and patios are exclusive common elements shown for display purposes only and location and size are subject to change without notice. All illustrations are artist concept only. The provisions of Schedule "B" of the Agreement, including Section C and 30 apply to the Schedule. C & D.

3 BEDROOM | Interior 1,456 Sq.Ft. • Exterior 200 Sq.Ft. • Total 1,656 Sq.Ft.



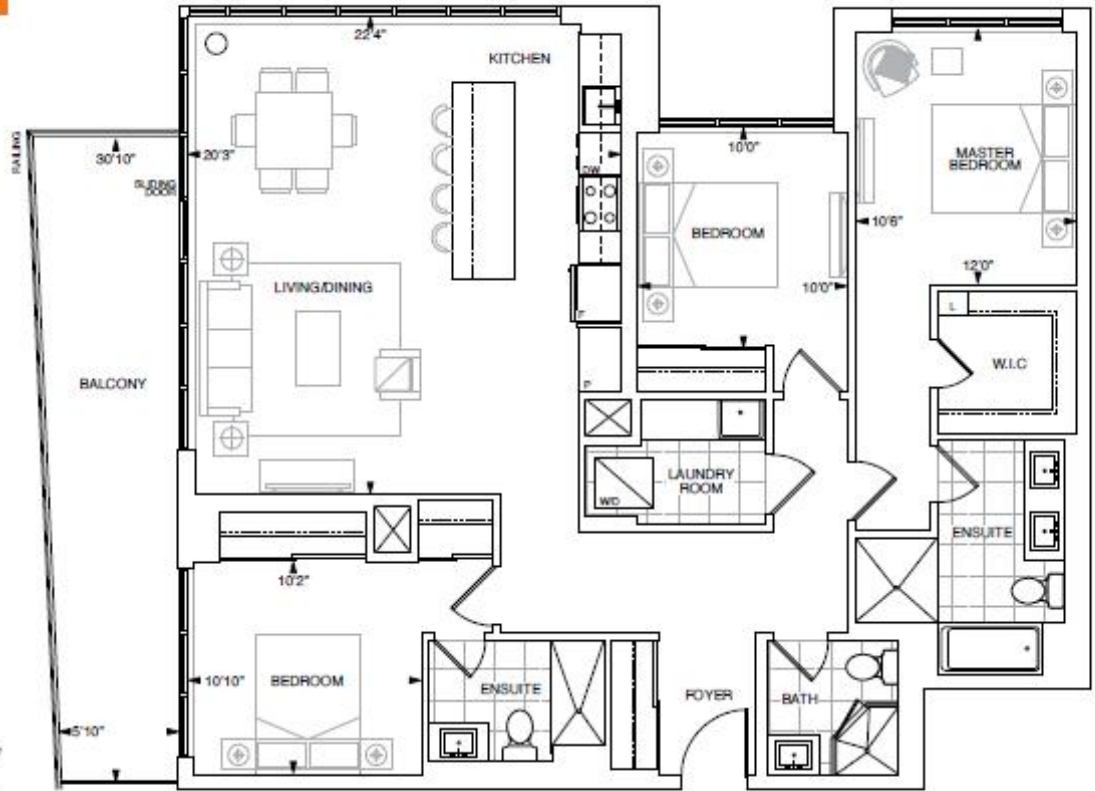
PENTHOUSE
10' CEILING | FLOOR 26-27



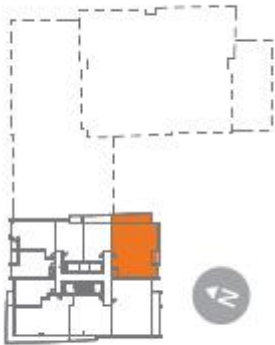
Dimensions, specifications, layouts, location of materials and fixtures, tile floor patterns and architectural detailing, including window size and location and door size, location and swing, are approximate only and are subject to change or modification, without notice. Actual usable floor space varies from stated floor area. Orientation of case may be reversed and Purchaser agrees to accept same. Balconies, terraces and patios are enclosed with common elements shown for display purposes only and location and size are subject to change without notice. All illustrations are artist concepts only. The provisions of Schedule "A" of this Agreement, including Section 4 and 5, apply to this Schedule. E & C.C.

E
1536

3 BEDROOM | Interior 1,536 Sq.Ft. • Exterior 202 Sq.Ft. • Total 1,738 Sq.Ft.



PENTHOUSE
10' CEILING | FLOOR 26-27





CHARISMA EAST - WEST TOWERS

Artist's concept.

TOWER + CHARISMA

SERIES SUITE FEATURES

KITCHEN

- Choice of custom designed cabinetry with full depth cabinet over fridge
- *Choice of custom designed cabinetry - with 41" upper cabinets and full depth upper cabinet over fridge, Charisma Suite Only*
- Choice of 3/4" quartz counter top with straight polished edge
- Backsplash - 3" x 6" ceramic wall tile
- Under mounted square edge stainless steel single bowl sink with single lever faucet with pull out spray
- **Appliance Package:**
 - Stainless Steel Energy Star fridge
 - Stainless Steel slide-in range
 - Stainless Steel Energy Star dishwasher
 - Stainless Steel exhaust fan

BATHROOM

- Choice of custom designed vanity
- Choice of 12"x 24" ceramic tile for bathroom floor and 3"x 6" ceramic wall tile for bathtub or shower enclosure
- Shower floor to have mosaic tile
- Ceramic tile baseboard
- Choice of quartz vanity counter top with approximately 3" backsplash return and under mounted basin
- Mirror over vanity basin
- Single lever faucet for all vanity basins
- Exhaust fan in all bathrooms vented to exterior
- Privacy lock on bathroom door
- Safety pressure balance valve for shower
- Framed glass door for shower enclosures
- Waterproof ceiling light provided in shower
- Water efficient low flow toilet(s)
- High pressure low flow shower head
- White plumbing fixtures

LAUNDRY

- In suite laundry closet with stacked white front loading dryer vented to exterior and Energy Star rated washer
- 8" x 8" white matte ceramic floor and baseboard tile
- Laundry tub where permitted as per plan

COMFORT + SECURITY

- Individual comfort-controlled heating and air conditioning on demand (Fan Coil System)
- Energy efficient thermal glazed windows with aluminum frames
- Energy recovery exhaust and ventilation system
- Suite equipped with emergency voice communication system, smoke detector and sprinkler protection system
- Fire rated suite entry door with privacy viewer
- Access device to building entrances and underground parking garage
- Video cameras at front entrance, parking garage and grounds, linked to concierge

INTERIOR FINISHES

- Approximately 9' ceiling height for floors measured from top of floor slab to underside of slab above before finishes and excluding bulkheads and required drop ceilings as per plan
- *Approximately 10' ceiling height for floors measured from top of floor slab to underside of slab above before finishes and excluding bulkheads and required drop ceilings as per plan, Charisma Suite Only*
- 8 mm laminate floor with acoustic underlay in all areas except for bathroom(s) and laundry
- 7' interior doors with 2 3/4" casings and 4 1/4" baseboards (where construction permits)
- *8' interior doors with 3" casings and 7 1/4" baseboards (where construction permits), Charisma Suite Only*
- Decorative brushed nickel lever door handles
- Bedroom closets to have swing door or panel sliding doors - as per plan
- Walls and drop ceilings to be painted birch white as per Vendor's samples
- Trim and doors to be painted birch white as per Vendor's samples
- White birch smooth ceilings in all areas except bedroom(s) ceilings which will have a white stipple finish
- Sliding glass door with screen or garden door to exterior balcony and/or terrace - as per plan
- White coated wire shelving in all closets with one bank of linen shelving per dwelling unit
- Mirrored front hall closet - as per plan

ELECTRICAL FEATURES

- Ceiling light fixtures package including bedroom(s)
- Switch to plug outlet in living area
- Capped ceiling outlet in dining area
- Copper electrical wiring with circuit breaker service panel
- Pre-wired cable outlet in living area, bedroom(s) and den
- Pre-wired telephone outlet in living area, bedroom(s) and den
- Individually metered hydro and water consumption
- Decora switches and receptacles

BALCONIES AND/OR TERRACES

- Terraces with 2' x 2' pavers
- Exterior electrical receptacle on balcony and/or terrace

Please Note: Features, finishes specifications and choice of Vendor's samples are subject to availability and may be changed without notice. Purchaser may be required to reselect colours/materials from Vendor's samples as a result of unavailability or discontinuation. Vendor may substitute materials for those designated in plans and specifications provided such materials are equal to or better than those designated. Variation from Vendor's samples may occur in finishing materials, kitchen and vanity cabinets, floor and wall finishes due to normal production and installation process. Some features may vary by suite design. In the event of any inconsistencies between Schedule "D" and Schedule "A" in respect of ceiling height, the ceiling height noted in Schedule "A" prevails. E. & O. E.

PENTHOUSE

SUITE FEATURES

KITCHEN

- Choice of custom designed cabinetry - with 41" upper cabinets and full depth upper cabinet over fridge
- Choice of 3/4" quartz counter top and backsplash with straight polished edge
- Under mounted square edge stainless steel single bowl sink with single lever faucet with pull out spray
- **Appliance Package:**
 - Stainless Steel Energy Star fridge
 - Stainless Steel slide-in range
 - Stainless Steel Energy Star dishwasher
 - Stainless Steel exhaust fan

BATHROOM

- Choice of custom designed vanity
- Choice of 12" x 24" porcelain tile for bathroom floor and 4" x 16" ceramic wall tile for bathtub or shower enclosure
- Porcelain tile baseboards
- Shower floor to have mosaic tile
- Choice of quartz vanity counter top with approximately 3" backsplash return and with under mounted basin
- Mirror over vanity basin
- Single lever faucet for all vanity basins
- Exhaust fan in all bathrooms vented to exterior
- Privacy lock on bathroom door
- Safety pressure balance valve for shower
- Framed glass door for shower enclosures
- Waterproof ceiling light provided in shower
- Water efficient low flow toilet(s)
- High pressure low flow shower head
- White plumbing fixtures

LAUNDRY

- In suite laundry closet with stacked white dryer vented to exterior and Energy Star rated washer
- 8" x 8" white matte ceramic floor and baseboard tile
- Laundry tub where permitted as per plan

COMFORT + SECURITY

- Individual comfort-controlled heating and air conditioning (Fan Coil System)
- Energy efficient thermal glazed windows with aluminum frames
- Energy recovery exhaust and ventilation system
- Suite equipped with emergency voice communication system, smoke detector and sprinkler protection system
- 8' fire rated suite entry door with privacy viewer
- Access device to building entrances and underground parking garage
- Video cameras at front entrance, parking garage and grounds, linked to concierge

INTERIOR FINISHES

- Approximately 10' ceiling height for floors measured from top of floor slab to underside of slab above before finishes and excluding bulkheads and required drop ceilings
- 5" stained engineered hardwood floor in all areas except for bathroom(s) and laundry
- 8' Interior doors with 3" casings and 7 1/4" baseboards (where construction permits)
- Decorative brushed nickel lever door handles
- Bedroom closets to have swing door or panel sliding doors - as per plan
- Walls and drop ceilings to be painted birch white as per Vendor's samples
- Trim and doors to be painted birch white as per Vendor's samples
- Birch white smooth ceilings in all areas except bedroom(s) ceilings which will have a white stipple finish
- Sliding glass door with screen or garden door to exterior balcony and/or terrace - as per plan
- White coated wire shelving in all closets with one bank of linen shelving per dwelling unit
- Mirrored front hall closet - as per plan

ELECTRICAL FEATURES

- Ceiling light fixtures package including bedroom(s)
- Switch to plug outlet in living area
- Capped ceiling outlet in dining area
- Copper electrical wiring with circuit breaker service panel
- Pre-wired cable outlet in living area, bedroom(s) and den
- Pre-wired telephone outlet in living area, bedroom(s) and den
- Individually metered hydro and water consumption
- Decora switches and receptacles

BALCONIES AND/OR TERRACES

- Terraces with 2' x 2' pavers
- Exterior electrical receptacle on balcony and/or terrace

Please Note: Features, finishes, specifications and choice of Vendor's samples are subject to availability and may be changed without notice. Purchaser may be required to reselect colours/ materials from Vendor's samples as a result of unavailability or discontinuation. Vendor may substitute materials for those designated in plans and specifications provided such materials are equal to or better than those designated. Variation from Vendor's samples may occur in finishing materials, kitchen and vanity cabinets, floor and wall finishes due to normal production and installation process. Some features may vary by suite design. In the event of any inconsistencies between Schedule "D" and Schedule "A" in respect of ceiling height, the ceiling height noted in Schedule "A" prevails. E. & O. E.